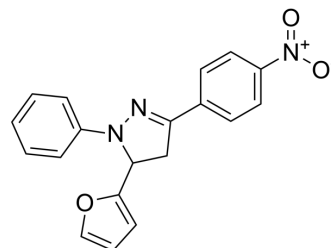


## RDR 02308

<b>Cat. No.:</b>	HY-154438		
<b>CAS No.:</b>	4155-82-2		
<b>Molecular Formula:</b>	C <sub>19</sub> H <sub>15</sub> N <sub>3</sub> O <sub>3</sub>		
<b>Molecular Weight:</b>	333.34		
<b>Target:</b>	Bacterial; Toll-like Receptor (TLR); Beta-lactamase		
<b>Pathway:</b>	Anti-infection; Immunology/Inflammation		
<b>Storage:</b>	Powder	-20°C	3 years
		4°C	2 years
	In solvent	-80°C	6 months
		-20°C	1 month



### SOLVENT & SOLUBILITY

#### In Vitro

DMSO : 100 mg/mL (299.99 mM; Need ultrasonic)

Preparing Stock Solutions	Solvent Concentration	Mass		
		1 mg	5 mg	10 mg
	1 mM	2.9999 mL	14.9997 mL	29.9994 mL
	5 mM	0.6000 mL	2.9999 mL	5.9999 mL
	10 mM	0.3000 mL	1.5000 mL	2.9999 mL

Please refer to the solubility information to select the appropriate solvent.

### BIOLOGICAL ACTIVITY

#### Description

RDR 02308 is a TLR4-MyD88 binding inhibitor that inhibits full-length  $\beta$ -lactamase<sup>[1]</sup>.

#### In Vitro

RDR 02308 (0-10  $\mu$ M; 1 h) inhibits LPS (HY-D1056)-mediated IL-6 production in RAW264.7 cells<sup>[1]</sup>.  
 MCE has not independently confirmed the accuracy of these methods. They are for reference only.  
 Western Blot Analysis<sup>[1]</sup>

Cell Line: RAW264.7 cells

Concentration: 0-10  $\mu$ M

Incubation Time: 1 h

Result: Inhibited LPS-mediated IL-6 production.

---

## REFERENCES

---

[1]. Lee HK, et al. Application of beta-lactamase enzyme complementation to the high-throughput screening of toll-like receptor signaling inhibitors. Mol Pharmacol. 2007 Oct;72(4):868-75.

---

**Caution: Product has not been fully validated for medical applications. For research use only.**

Tel: 609-228-6898

Fax: 609-228-5909

E-mail: [tech@MedChemExpress.com](mailto:tech@MedChemExpress.com)

Address: 1 Deer Park Dr, Suite Q, Monmouth Junction, NJ 08852, USA