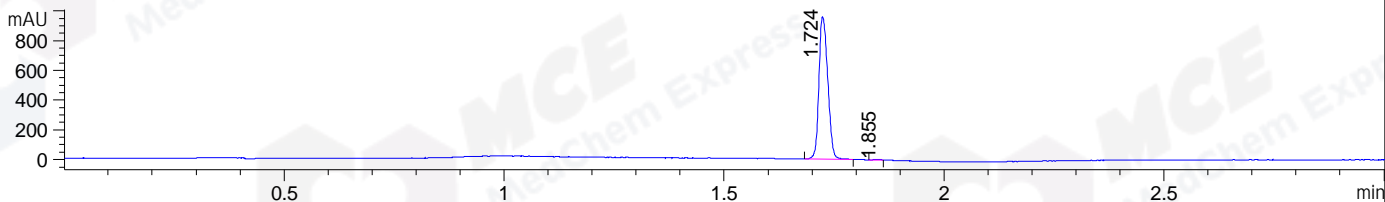
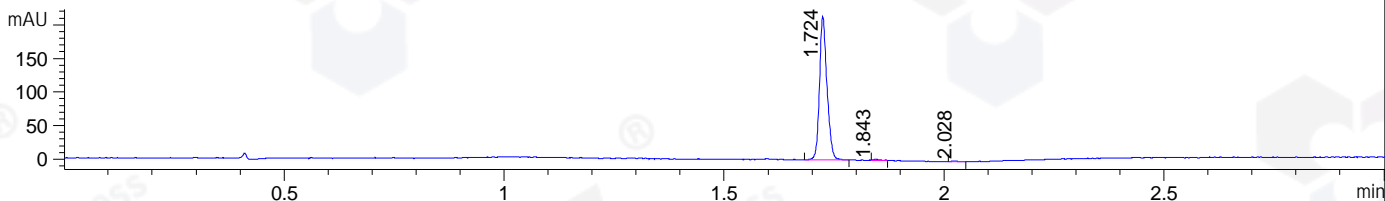


File ..\DATA\2020\20200803\1061\BIZ2020-731-WMX6.D Tgt Mass (CHM):
 Injection Date : 3 Aug 20 10:23 am +0800 Seq. Line : 18
 Sample Name : BIZ2020-731-WMX6 Location : P1-C-08
 Acq. Operator : ZJ_1432 Inj : 1
 Spec. Reported : MS Integration Inj Volume : 1 ul
 Acq. Method : D:\Chem32\1\data\2020\20200803\1061\1-POS-3MIN.M
 Analysis Method : D:\CHEM32\1\DATA\2020\20200803\1061\1-POS-3MIN.M
 CAS NO. : 49843-98-3
 Method Info : Mobile Phase: A: water(0.01%TFA) B:ACN(0.01%TFA)
 Gradient: 5% to 95%B within 1.3 min
 Flow Rate :1.8ml/min
 Column :SunFire C18, 4.6*50mm,3.5um A-RP-314
 Oven Temperature : 45C

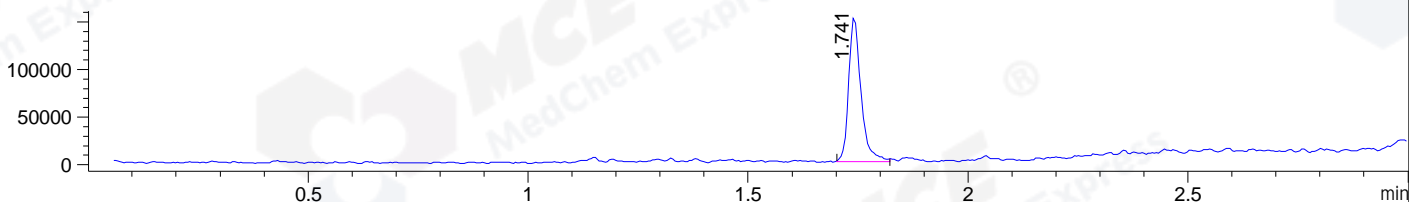
DAD1 B, Sig=214,4 Ref=off



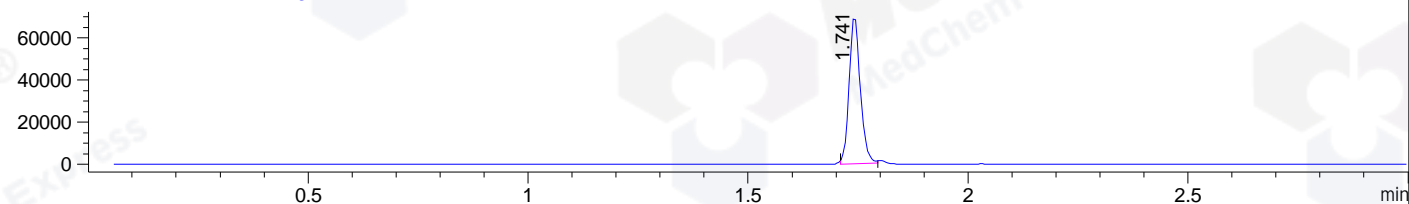
DAD1 C, Sig=254,4 Ref=off



MSD1 TIC, MS File ES-API, Pos, Scan, Frag: 70



Ion 249, MSD1 249, Target Mass 248 +H Positive, EIC=248.7:249.7



Integration Results for DAD1 B, Sig=214,4 Ref=off

RetTim	Width	Area	Height	Area%	MS(+)
1.72	0.02	1336.42	959.40	99.87	249
1.86	0.02	1.67	1.86	0.13	ND

Integration Results for DAD1 C, Sig=254,4 Ref=off

RetTim	Width	Area	Height	Area%	MS(+)
1.72	0.02	252.80	213.78	99.10	249
1.84	0.02	1.37	1.39	0.54	ND
2.03	0.02	0.93	0.95	0.37	ND

Integration Results for MSD1 TIC, MS File

RetTim	Width	Area	Height	Area%	MS(+)
1.74	0.03	296653.16	152103.05	100.00	249

Ret. Time: 1.74

<<<< POSITIVE SPECTRA >>>>

ES-API Positive

