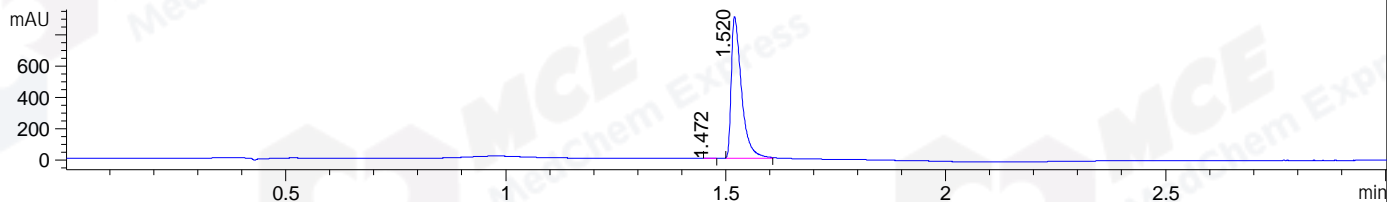
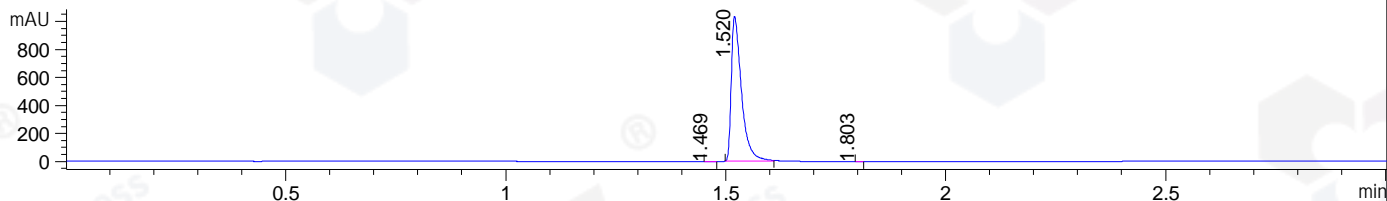


File ..\DATA\2019\20190311\553\CPK2019-308-22441.D Tgt Mass (CHM):
 Injection Date : 11 Mar 19 12:08 pm +0800 Seq. Line : 31
 Sample Name : CPK2019-308-22441 Location : P2-F-08
 Acq. Operator : LQ_1052 Inj : 1
 Spec. Reported : MS Integration Inj Volume : 1 ul
 Acq. Method : D:\Chem32\1\data\2019\20190311\553\1-POS-3MIN-1.M
 Analysis Method : D:\CHEM32\1\DATA\2019\20190311\553\1-POS-3MIN-1.M
 Catalog No : HY-15465B Batch#22441
 Method Info : Mobile Phase: A: water(0.01%TFA) B:ACN(0.01%TFA)
 Gradient: 5% to 95%B within 1.3 min
 Flow Rate :1.8ml/min
 Column :SunFire C18, 4.6*50mm,3.5um A-RP-314
 Oven Temperature : 45

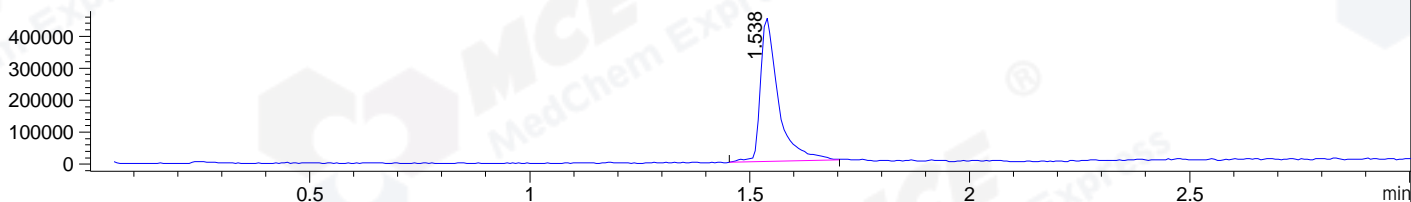
DAD1 B, Sig=214,4 Ref=off



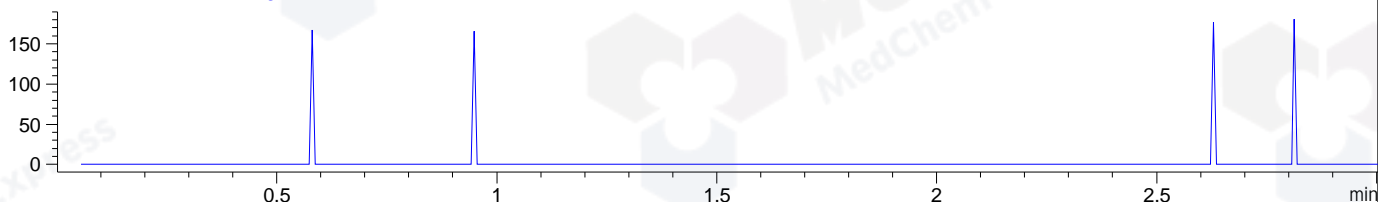
DAD1 C, Sig=254,4 Ref=off



MSD1 TIC, MS File ES-API, Pos, Scan, Frag: 70



Ion 600, MSD1 600, Target Mass 599 +H Positive, EIC=599.7:600.7



Integration Results for DAD1 B, Sig=214,4 Ref=off

RetTim	Width	Area	Height	Area%	MS (+)
1.47	0.02	1.00	0.74	0.07	507
1.52	0.02	1467.25	907.59	99.93	501

Integration Results for DAD1 C, Sig=254,4 Ref=off

RetTim	Width	Area	Height	Area%	MS (+)
1.47	0.02	0.37	0.32	0.02	507
1.52	0.02	1664.36	1035.72	99.97	501
1.80	0.01	0.13	0.18	0.01	501

Integration Results for MSD1 TIC, MS File

RetTim	Width	Area	Height	Area%	MS (+)
1.54	0.04	1272386.88	448544.00	100.00	501

Ret. Time: 1.54

<<<< POSITIVE SPECTRA >>>>

ES-API Positive

