

File ..8-3 2018-01-18 13-43-42\CPK2018-117-08316.D Tgt Mass (CHM):

Injection Date : 18 Jan 18 2:45 pm +0800 Seq. Line : 14

Sample Name : CPK2018-117-08316 Location : P2-A-06

Acq. Operator : HCL\_771 Inj : 1

Spec. Reported : MS Integration Inj Volume : 1 ul

Acq. Method : D:\chem32\1\DATA\20180118\20180118-3 2018-01-18 13-43-42\1-POS-3MIN-1.M

Analysis Method : D:\CHEM32\1\DATA\20180118\20180118-3 2018-01-18 13-43-42\1-POS-3MIN-1.M

Catalog No : HY-15468 Batch#08316 A-RP-189

Method Info : Mobile Phase: A: water(0.01%TFA) B:ACN(0.01%TFA)

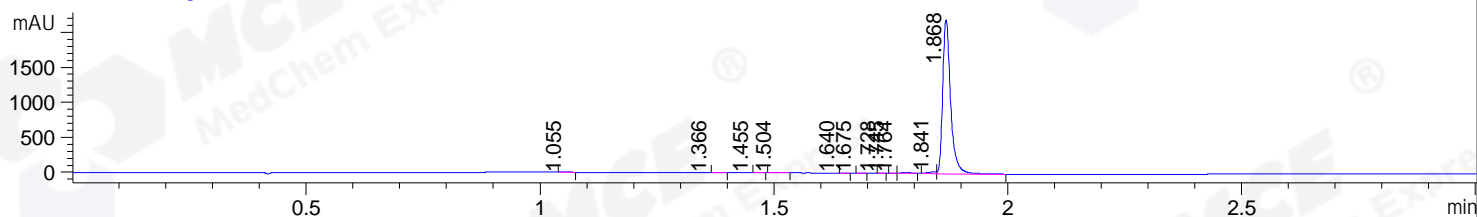
Gradient: 5% to 95%B within 1.3 min

Flow Rate :1.8ml/min

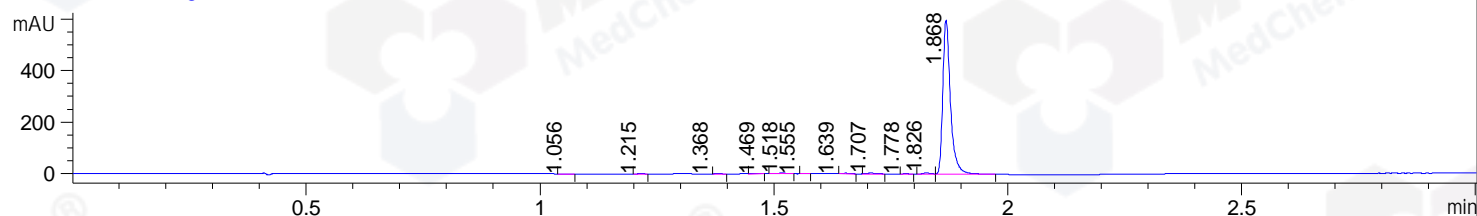
Column :SunFire C18, 4.6\*50mm,3.5um A-RP-186

Oven Temperature : 45C

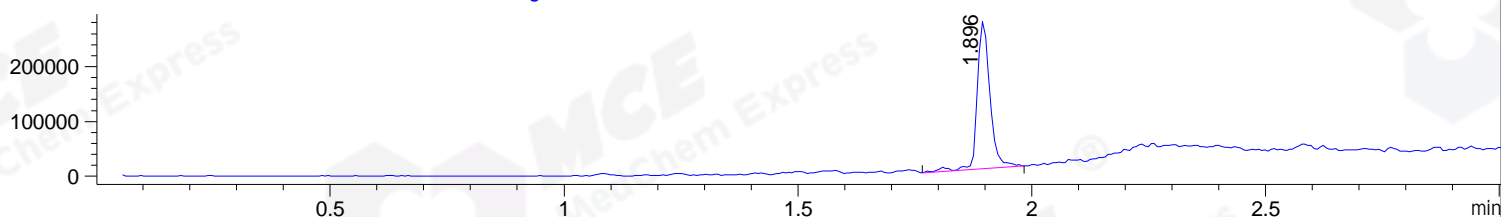
DAD1 B, Sig=214,4 Ref=off



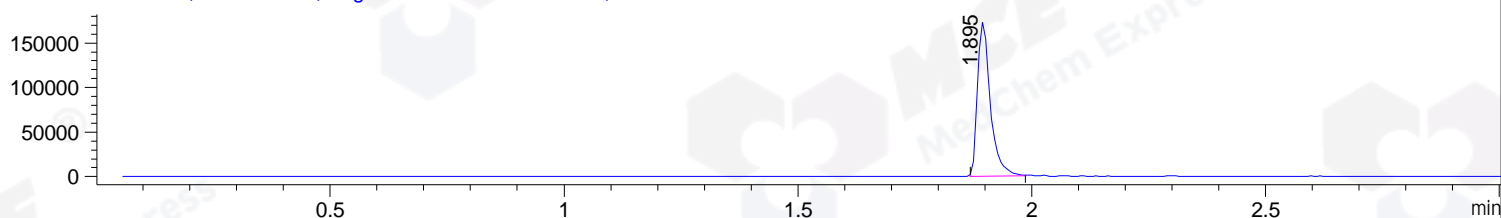
DAD1 C, Sig=254,4 Ref=off



MSD1 TIC, MS File ES-API, Pos, Scan, Frag: 70



Ion 353.3, MSD1 353.3, Target Mass 352.3 +H Positive, EIC=353:354



## Integration Results for DAD1 B, Sig=214,4 Ref=off

RetTim	Width	Area	Height	Area%	MS (+)
1.05	0.02	2.06	2.08	0.08	ND
1.37	0.04	1.94	0.42	0.07	ND
1.45	0.04	0.83	-0.01	0.03	ND
1.50	0.04	1.61	1.04	0.06	ND
1.64	0.03	0.79	0.14	0.03	ND
1.68	0.02	1.12	0.03	0.04	ND
1.73	0.02	0.82	1.09	0.03	327
1.75	0.02	0.71	0.25	0.03	ND
1.76	0.02	16.66	0.35	0.63	ND
1.84	0.02	28.79	25.57	1.09	ND
1.87	0.02	2585.85	2198.17	97.90	353

## Integration Results for DAD1 C, Sig=254,4 Ref=off

RetTim	Width	Area	Height	Area%	MS (+)
1.06	0.05	0.57	0.46	0.08	ND
1.22	0.02	0.94	0.98	0.13	ND
1.37	0.02	0.98	0.14	0.14	ND

1.47	0.03	0.77	0.70	0.11	ND
1.52	0.02	3.79	2.69	0.54	ND
1.56	0.02	0.60	0.02	0.09	327
1.64	0.02	2.27	0.08	0.32	ND
1.71	0.02	3.77	3.34	0.54	ND
1.78	0.03	0.69	0.63	0.10	ND
1.83	0.02	4.79	4.34	0.68	ND
1.87	0.02	680.85	597.80	97.26	353

## Integration Results for MSD1 TIC, MS File

RetTim	Width	Area	Height	Area%	MS(+)
1.90	0.03	513662.22	269534.09	100.00	353

Ret. Time: 1.90

<<<< POSITIVE SPECTRA >>>>

