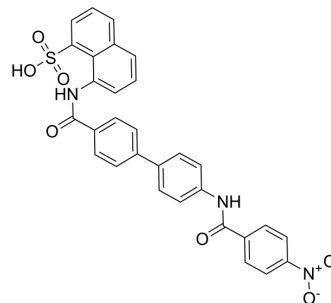


## DRI-C21041

Cat. No.:	HY-154821
CAS No.:	2101765-78-8
Molecular Formula:	C <sub>30</sub> H <sub>21</sub> N <sub>3</sub> O <sub>7</sub> S
Molecular Weight:	567.57
Target:	TNF Receptor
Pathway:	Apoptosis
Storage:	Please store the product under the recommended conditions in the Certificate of Analysis.



### BIOLOGICAL ACTIVITY

Description	DRI-C21041 is a CD40/CD40L interaction inhibitor, with an IC <sub>50</sub> of 0.31 μM. DRI-C21041 inhibits the immune response induced by alloantigen <sup>[1]</sup> .
IC <sub>50</sub> & Target	CD40L 0.31 μM (IC <sub>50</sub> )
In Vitro	DRI-C21041 inhibits CD40L-induced B-cell activation, proliferation, and the activation of NF-κB <sup>[1]</sup> . MCE has not independently confirmed the accuracy of these methods. They are for reference only.

### REFERENCES

[1]. Lu H, et, al. Recent advances in the development of protein-protein interactions modulators: mechanisms and clinical trials. Signal Transduct Target Ther. 2020 Sep 23;5(1):213.

**Caution: Product has not been fully validated for medical applications. For research use only.**

Tel: 609-228-6898

Fax: 609-228-5909

E-mail: tech@MedChemExpress.com

Address: 1 Deer Park Dr, Suite Q, Monmouth Junction, NJ 08852, USA