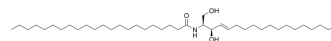


## C22-Ceramide

**Cat. No.:** HY-154831  
**CAS No.:** 27888-44-4  
**Molecular Formula:** C<sub>40</sub>H<sub>79</sub>NO<sub>3</sub>  
**Molecular Weight:** 622.06  
**Target:** Liposome  
**Pathway:** Metabolic Enzyme/Protease  
**Storage:** 4°C, protect from light  
 \* In solvent : -80°C, 6 months; -20°C, 1 month (protect from light)



### SOLVENT & SOLUBILITY

#### In Vitro

Ethanol : 5 mg/mL (8.04 mM; ultrasonic and warming and heat to 60°C)  
 DMF : 0.33 mg/mL (0.53 mM; ultrasonic and warming and heat to 60°C)

	Solvent Concentration	Mass	1 mg	5 mg	10 mg
Preparing Stock Solutions	1 mM		1.6076 mL	8.0378 mL	16.0756 mL
	5 mM		0.3215 mL	1.6076 mL	3.2151 mL
	10 mM		---	---	---

Please refer to the solubility information to select the appropriate solvent.

### BIOLOGICAL ACTIVITY

#### Description

C22-Ceramide (Cer d18:1/22:0) is an endogenous bioactive sphingolipid. C22-Ceramide reduces the propensity of C16-ceramide channel formation in isolated rat liver mitochondria and in liposomes<sup>[1]</sup>.

### REFERENCES

[1]. Stiban J, et al. Very long chain ceramides interfere with C16-ceramide-induced channel formation: A plausible mechanism for regulating the initiation of intrinsic apoptosis. Biochim Biophys Acta. 2015 Feb;1848(2):561-7.

**Caution: Product has not been fully validated for medical applications. For research use only.**

Tel: 609-228-6898

Fax: 609-228-5909

E-mail: tech@MedChemExpress.com

Address: 1 Deer Park Dr, Suite Q, Monmouth Junction, NJ 08852, USA