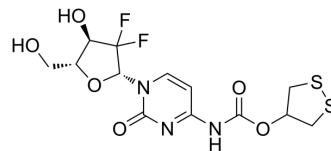


S-Gem

Cat. No.:	HY-154842
CAS No.:	2169925-98-6
Molecular Formula:	C ₁₃ H ₁₅ F ₂ N ₃ O ₆ S ₂
Molecular Weight:	411.4
Target:	Nucleoside Antimetabolite/Analog; DNA/RNA Synthesis; Autophagy; Apoptosis
Pathway:	Cell Cycle/DNA Damage; Autophagy; Apoptosis
Storage:	Please store the product under the recommended conditions in the Certificate of Analysis.



BIOLOGICAL ACTIVITY

Description

S-Gem is a TrxR-dependent prodrug of Gemcitabine (HY-17026) and selectively activated by TrxR. S-Gem shows less cytotoxicity compared to Gemcitabine^[1].

REFERENCES

[1]. Li X, et, al. Combination of chemotherapy and oxidative stress to enhance cancer cell apoptosis. Chem Sci. 2020 Feb 25;11(12):3215-3222.

Caution: Product has not been fully validated for medical applications. For research use only.

Tel: 609-228-6898

Fax: 609-228-5909

E-mail: tech@MedChemExpress.com

Address: 1 Deer Park Dr, Suite Q, Monmouth Junction, NJ 08852, USA