

File ..\DATA\2019\20190110\550\CPK2019-109-20725.D Tgt Mass (CHM):

Injection Date : 10 Jan 19 9:46 am +0800 Seq. Line : 8

Sample Name : CPK2019-109-20725 Location : PL-D-06

Acq. Operator : LQ_1052 Inj : 1

Spec. Reported : MS Integration Inj Volume : 1 ul

Acq. Method : D:\Chem32\1\data\2019\20190110\550\1-POS-3MIN-1.M

Analysis Method : D:\CHEM32\1\DATA\2019\20190110\550\1-POS-3MIN-1.M

Catalog No : HY-15490 Batch#20725

Method Info : Mobile Phase: A: water(0.01%TFA) B:ACN(0.01%TFA)

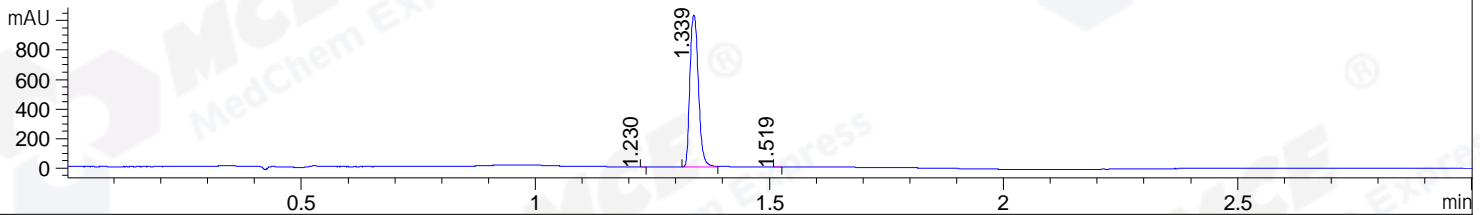
Gradient: 5% to 95%B within 1.3 min

Flow Rate :1.8ml/min

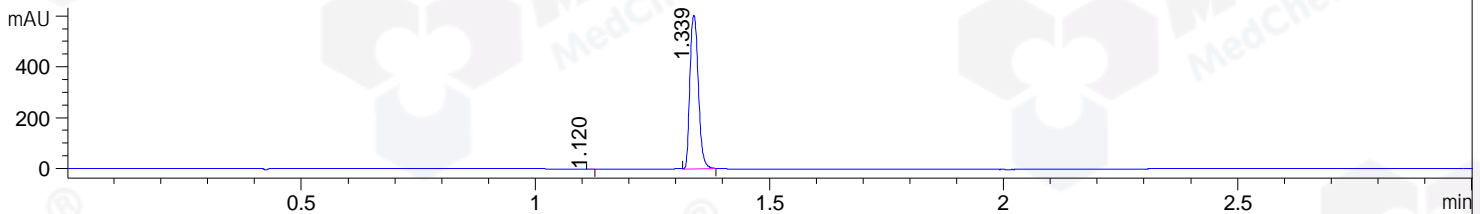
Column :SunFire C18, 4.6*50mm,3.5um A-RP-314

Oven Temperature : 45

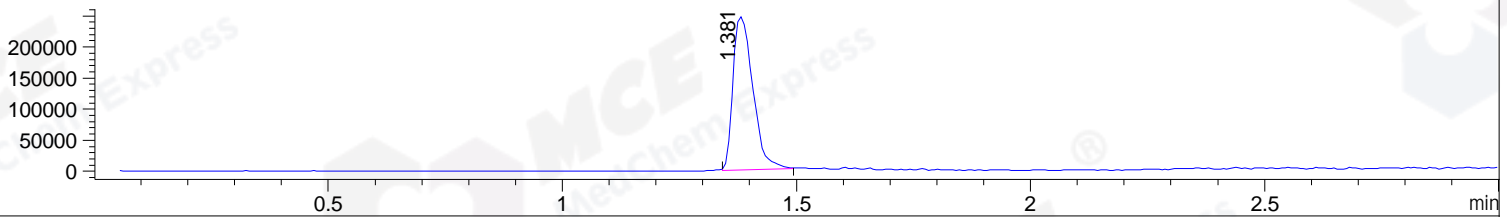
DAD1 B, Sig=214,4 Ref=off



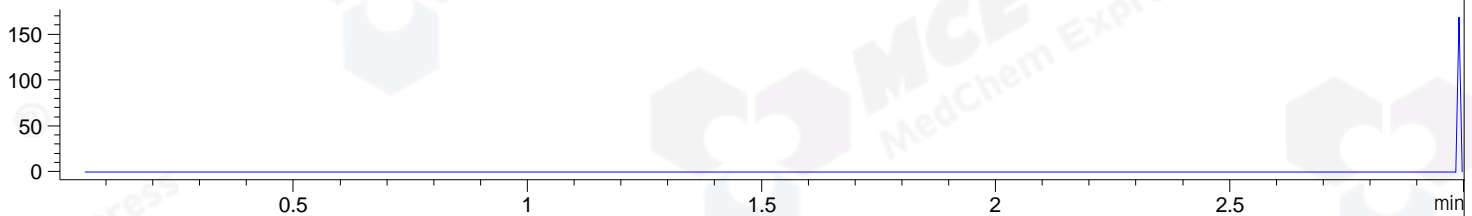
DAD1 C, Sig=254,4 Ref=off



MSD1 TIC, MS File ES-API, Pos, Scan, Frag: 70



Ion 411.3, MSD1 411.3, Target Mass 410.3 +H Positive, EIC=411:412



Integration Results for DAD1 B, Sig=214,4 Ref=off

RetTim	Width	Area	Height	Area%	MS (+)
1.23	0.01	0.22	0.55	0.02	ND
1.34	0.02	1297.61	1029.66	99.96	338
1.52	0.01	0.26	0.45	0.02	338

Integration Results for DAD1 C, Sig=254,4 Ref=off

RetTim	Width	Area	Height	Area%	MS (+)
1.12	0.01	0.08	0.16	0.01	ND
1.34	0.02	758.11	604.29	99.99	338

Integration Results for MSD1 TIC, MS File

RetTim	Width	Area	Height	Area%	MS (+)
1.38	0.04	728287.75	246485.25	100.00	338

Ret. Time: 1.38

<<<< POSITIVE SPECTRA >>>>

ES-API Positive

