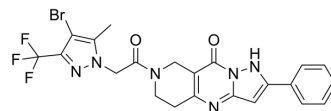


PAT1inh-B01

Cat. No.:	HY-154912
CAS No.:	1775330-54-5
Molecular Formula:	C ₂₂ H ₁₈ BrF ₃ N ₆ O ₂
Molecular Weight:	535.32
Target:	Others
Pathway:	Others
Storage:	4°C, protect from light * In solvent : -80°C, 6 months; -20°C, 1 month (protect from light)



SOLVENT & SOLUBILITY

In Vitro	DMSO : 12.5 mg/mL (23.35 mM); ultrasonic and warming and heat to 60°C					
	Preparing Stock Solutions	Solvent Concentration	Mass			
			1 mg	5 mg	10 mg	
			1 mM	1.8680 mL	9.3402 mL	18.6804 mL
			5 mM	0.3736 mL	1.8680 mL	3.7361 mL
10 mM	0.1868 mL	0.9340 mL	1.8680 mL			
Please refer to the solubility information to select the appropriate solvent.						
In Vivo	1. Add each solvent one by one: 10% DMSO >> 90% corn oil Solubility: ≥ 1.25 mg/mL (2.34 mM); Clear solution					

BIOLOGICAL ACTIVITY

Description	PAT1inh-B01 is a selective SLC26A6 inhibitor. PAT1inh-B01 inhibits PAT1 (a Cl ⁻ /HCO ₃ ⁻ exchanger)-mediated anion exchange (IC ₅₀ : 350 nM). PAT1inh-B01 blocks fluid absorption in small intestine. PAT1inh-B01 can be used for research of small intestinal hyposecretory disorders ^[1] .
-------------	---

REFERENCES

[1]. Cil O, et al. SLC26A6-selective inhibitor identified in a small-molecule screen blocks fluid absorption in small intestine. JCI Insight. 2021 Jun 8;6(11):e147699.

Caution: Product has not been fully validated for medical applications. For research use only.

Tel: 609-228-6898

Fax: 609-228-5909

E-mail: tech@MedChemExpress.com

Address: 1 Deer Park Dr, Suite Q, Monmouth Junction, NJ 08852, USA