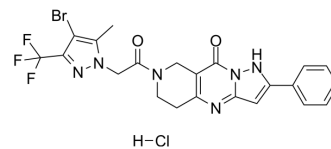


## PAT1inh-B01 hydrochloride

Cat. No.:	HY-154912A
Molecular Formula:	C <sub>22</sub> H <sub>19</sub> BrClF <sub>3</sub> N <sub>6</sub> O <sub>2</sub>
Molecular Weight:	571.78
Target:	Others
Pathway:	Others
Storage:	4°C, sealed storage, away from moisture and light * In solvent : -80°C, 6 months; -20°C, 1 month (sealed storage, away from moisture and light)



### BIOLOGICAL ACTIVITY

#### Description

PAT1inh-B01 hydrochloride is a selective SLC26A6 inhibitor. PAT1inh-B01 hydrochloride inhibits PAT1 (a Cl<sup>-</sup>/HCO<sub>3</sub><sup>-</sup> exchanger)-mediated anion exchange (IC<sub>50</sub>: 350 nM). PAT1inh-B01 hydrochloride blocks fluid absorption in small intestine. PAT1inh-B01 hydrochloride can be used for research of small intestinal hyposecretory disorders<sup>[1]</sup>.

### REFERENCES

[1]. Cil O, et al. SLC26A6-selective inhibitor identified in a small-molecule screen blocks fluid absorption in small intestine. JCI Insight. 2021 Jun 8;6(11):e147699.

**Caution: Product has not been fully validated for medical applications. For research use only.**

Tel: 609-228-6898

Fax: 609-228-5909

E-mail: tech@MedChemExpress.com

Address: 1 Deer Park Dr, Suite Q, Monmouth Junction, NJ 08852, USA