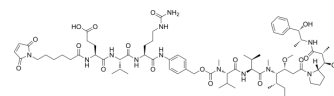


MC-EVCit-PAB-MMAE

Cat. No.:	HY-154915
CAS No.:	2873452-49-2
Molecular Formula:	C ₇₃ H ₁₁₂ N ₁₂ O ₁₈
Molecular Weight:	1445.74
Target:	Drug-Linker Conjugates for ADC; Microtubule/Tubulin
Pathway:	Antibody-drug Conjugate/ADC Related; Cell Cycle/DNA Damage; Cytoskeleton
Storage:	4°C, protect from light, stored under nitrogen * In solvent : -80°C, 6 months; -20°C, 1 month (protect from light, stored under nitrogen)



SOLVENT & SOLUBILITY

In Vitro

DMSO : 85 mg/mL (58.79 mM); ultrasonic and warming and heat to 60°C)

Preparing Stock Solutions	Solvent Concentration	Mass		
		1 mg	5 mg	10 mg
	1 mM	0.6917 mL	3.4584 mL	6.9169 mL
	5 mM	0.1383 mL	0.6917 mL	1.3834 mL
	10 mM	0.0692 mL	0.3458 mL	0.6917 mL

Please refer to the solubility information to select the appropriate solvent.

In Vivo

- Add each solvent one by one: 10% DMSO >> 40% PEG300 >> 5% Tween-80 >> 45% saline
Solubility: ≥ 4.25 mg/mL (2.94 mM); Clear solution
- Add each solvent one by one: 10% DMSO >> 90% (20% SBE-β-CD in saline)
Solubility: ≥ 4.25 mg/mL (2.94 mM); Clear solution

BIOLOGICAL ACTIVITY

Description

MC-EVCit-PAB-MMAE (Linker-Payload 11) is a drug-linker conjugates for ADC. MC-EVCit-PAB-MMAE contains the ADCs linker (MC-EVCit-PAB) and a potent tubulin polymerization inhibitor MMAE (HY-15162)^[1].

REFERENCES

- [1]. Matsuda, Yutaka, et al. Conjugate of antibody and functional substance or salt of said conjugate, and compound for use in production of said conjugate or salt of said compound. Patent. WO2022255425.

Caution: Product has not been fully validated for medical applications. For research use only.

Tel: 609-228-6898

Fax: 609-228-5909

E-mail: tech@MedChemExpress.com

Address: 1 Deer Park Dr, Suite Q, Monmouth Junction, NJ 08852, USA