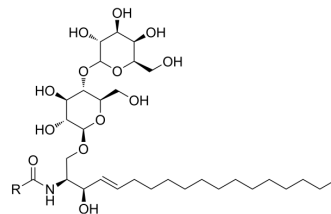


## Lactosylceramide (porcine RBC)

Cat. No.:	HY-154921A
Target:	Endogenous Metabolite
Pathway:	Metabolic Enzyme/Protease
Storage:	Please store the product under the recommended conditions in the Certificate of Analysis.



### BIOLOGICAL ACTIVITY

#### Description

Lactosylceramide (porcine RBC) is an endogenous bioactive sphingolipid<sup>[1]</sup>.

### REFERENCES

[1]. Je-Seong Won, et al. Lactosylceramide: a lipid second messenger in neuroinflammatory disease. *J Neurochem.* 2007 Nov;103 Suppl 1:180-91.

**Caution: Product has not been fully validated for medical applications. For research use only.**

Tel: 609-228-6898

Fax: 609-228-5909

E-mail: tech@MedChemExpress.com

Address: 1 Deer Park Dr, Suite Q, Monmouth Junction, NJ 08852, USA