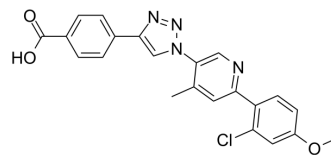


LANA-DNA-IN-2

Cat. No.:	HY-155128
CAS No.:	3033110-75-4
Molecular Formula:	C ₂₂ H ₁₇ ClN ₄ O ₃
Molecular Weight:	420.85
Target:	Others
Pathway:	Others
Storage:	Please store the product under the recommended conditions in the Certificate of Analysis.



BIOLOGICAL ACTIVITY

Description

LANA-DNA-IN-2 (Compound 20) is a latency-associated nuclear antigen (LANA)-DNA interaction inhibitor. LANA-DNA-IN-2 can be used for research of Kaposi's sarcoma-associated herpesvirus (KSHV) infection^[1].

REFERENCES

[1]. Berwanger A, et al. Disrupting Kaposi's Sarcoma-Associated Herpesvirus (KSHV) Latent Replication with a Small Molecule Inhibitor. *J Med Chem*. 2023 Aug 10;66(15):10782-10790.

Caution: Product has not been fully validated for medical applications. For research use only.

Tel: 609-228-6898

Fax: 609-228-5909

E-mail: tech@MedChemExpress.com

Address: 1 Deer Park Dr, Suite Q, Monmouth Junction, NJ 08852, USA