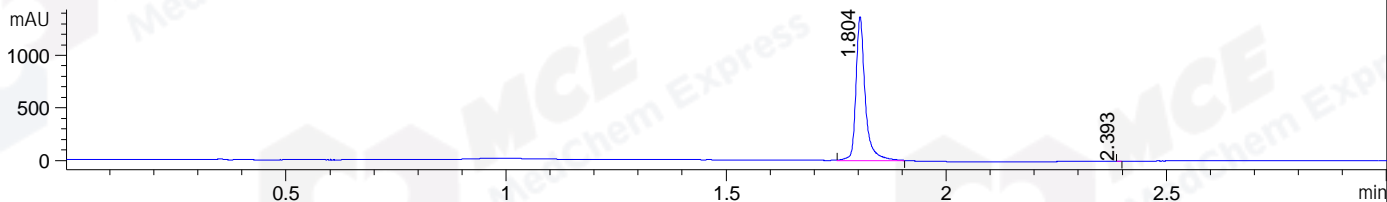
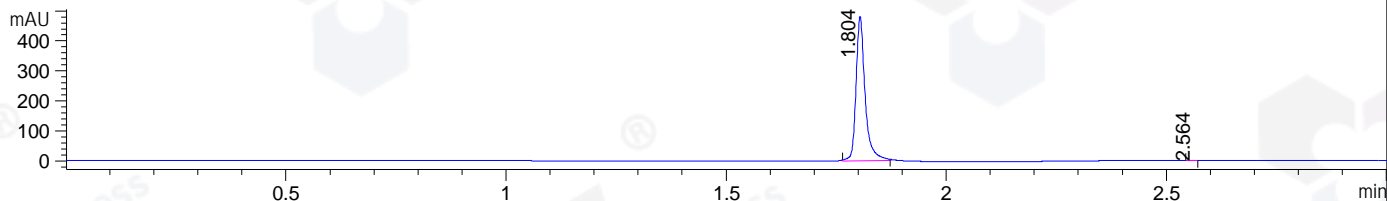


File ..\DATA\2019\20190411\561\CPK2019-411-09661.D Tgt Mass (CHM):
 Injection Date : 11 Apr 19 3:44 pm +0800 Seq. Line : 13
 Sample Name : CPK2019-411-09661 Location : P1-A-06
 Acq. Operator : LQ_1052 Inj : 1
 Spec. Reported : MS Integration Inj Volume : 1 ul
 Acq. Method : D:\Chem32\1\data\2019\20190411\561\1-POS-3MIN-1.M
 Analysis Method : D:\CHEM32\1\DATA\2019\20190411\561\1-POS-3MIN-1.M
 Catalog No : HY-15514 Batch# 09661-20190411
 Method Info : Mobile Phase: A: water(0.01%TFA) B:ACN(0.01%TFA)
 Gradient: 5% to 95%B within 1.3 min
 Flow Rate :1.8ml/min
 Column :SunFire C18, 4.6*50mm,3.5um A-RP-314
 Oven Temperature : 45

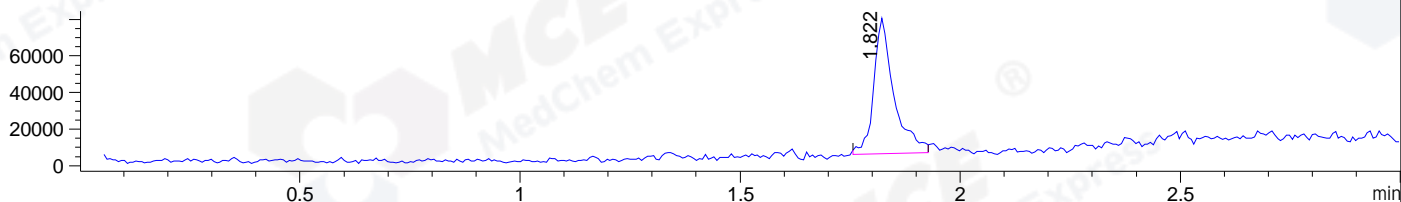
DAD1 B, Sig=214,4 Ref=off



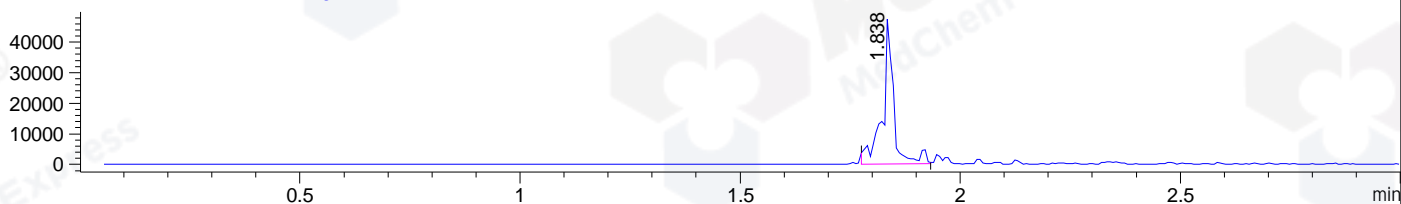
DAD1 C, Sig=254,4 Ref=off



MSD1 TIC, MS File ES-API, Pos, Scan, Frag: 70



Ion 553.5, MSD1 553.5, Target Mass 552.5 +H Positive, EIC=553.2:554.2



Integration Results for DAD1 B, Sig=214,4 Ref=off

RetTim	Width	Area	Height	Area%	MS (+)
1.80	0.02	2016.89	1369.29	99.99	553
2.39	0.01	0.15	0.38	0.01	142

Integration Results for DAD1 C, Sig=254,4 Ref=off

RetTim	Width	Area	Height	Area%	MS (+)
1.80	0.02	690.73	481.60	99.98	553
2.56	0.01	0.17	0.19	0.02	142

Integration Results for MSD1 TIC, MS File

RetTim	Width	Area	Height	Area%	MS (+)
1.82	0.05	237338.89	74062.98	100.00	553

Ret. Time: 1.82

<<<< POSITIVE SPECTRA >>>>

ES-API Positive

