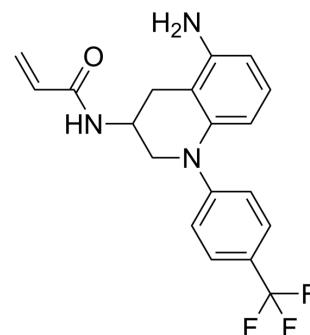


SWTX-143

Cat. No.:	HY-155338
CAS No.:	2766575-48-6
Molecular Formula:	C ₁₉ H ₁₈ F ₃ N ₃ O
Molecular Weight:	361.36
Target:	YAP
Pathway:	Stem Cell/Wnt
Storage:	Please store the product under the recommended conditions in the Certificate of Analysis.



SOLVENT & SOLUBILITY

In Vitro

DMSO : 125 mg/mL (345.92 mM; Need ultrasonic)

Preparing Stock Solutions	Solvent Concentration	Mass		
		1 mg	5 mg	10 mg
	1 mM	2.7673 mL	13.8366 mL	27.6732 mL
	5 mM	0.5535 mL	2.7673 mL	5.5346 mL
	10 mM	0.2767 mL	1.3837 mL	2.7673 mL

Please refer to the solubility information to select the appropriate solvent.

BIOLOGICAL ACTIVITY

Description

SWTX-143 is a novel covalent YAP/TAZ-TEAD inhibitor that binds to the palmitoylation pocket of all four TEAD isoforms. SWTX-143 causes irreversible and specific inhibition of the transcriptional activity of YAP/TAZ-TEAD and shows antitumor activity^[1].

REFERENCES

[1]. Hanne Hillen, et al. A novel irreversible TEAD inhibitor, SWTX-143, blocks Hippo pathway transcriptional output and causes tumor regression in preclinical mesothelioma models. *Mol Cancer Ther.* 2023 Sep 23.

Caution: Product has not been fully validated for medical applications. For research use only.

Tel: 609-228-6898

Fax: 609-228-5909

E-mail: tech@MedChemExpress.com

Address: 1 Deer Park Dr, Suite Q, Monmouth Junction, NJ 08852, USA