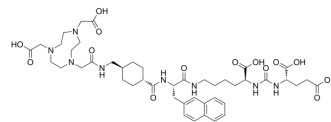


PSMA-BCH

Cat. No.:	HY-155483
CAS No.:	1703768-73-3
Molecular Formula:	C ₄₅ H ₆₄ N ₈ O ₁₄
Molecular Weight:	941.03
Target:	Others
Pathway:	Others
Storage:	Please store the product under the recommended conditions in the Certificate of Analysis.



BIOLOGICAL ACTIVITY

Description

PSMA-BCH (NOTA-PSMA) is a NOTA-conjugated precursor. NOTA is a bifunctional chelate which acts as the framework to construct PET imaging tools^[1].

REFERENCES

[1]. Teli Liu, et al. Synthesis and preclinical evaluation of ⁶⁸Ga-PSMA-BCH for prostate cancer imaging. *Bioorg Med Chem Lett*. 2019 Apr 1;29(7):933-937.

Caution: Product has not been fully validated for medical applications. For research use only.

Tel: 609-228-6898

Fax: 609-228-5909

E-mail: tech@MedChemExpress.com

Address: 1 Deer Park Dr, Suite Q, Monmouth Junction, NJ 08852, USA