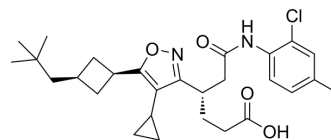


## JTE-151

|                    |   |
|--------------------|---|
| Cat. No.:          | HY-155487   |
| CAS No.:           | 1404380-58-0  |
| Molecular Formula: | C <sub>28</sub> H <sub>37</sub> ClN <sub>2</sub> O <sub>4</sub>                           |
| Molecular Weight:  | 501.06  |
| Target:            | ROR   |
| Pathway:           | Metabolic Enzyme/Protease; Vitamin D Related/Nuclear Receptor                             |
| Storage:           | Please store the product under the recommended conditions in the Certificate of Analysis. |



## BIOLOGICAL ACTIVITY

### Description

JTE-151 is a ROR $\gamma$  inhibitor, which can suppress overactive immune response through inhibition of ROR $\gamma$  related to the activation of Th17 cells, making JTE-151 possible to be used in autoimmune disease research<sup>[1]</sup>.

## REFERENCES

[1]. Hiromu Takiguchi, et al. Practical Synthesis of Chiral 3-(Hydroxyiminomethyl)adipic Acid, a Key Intermediate of the ROR- $\gamma$  Inhibitor JTE-151, via Crystallization-Induced Dynamic Resolution

**Caution: Product has not been fully validated for medical applications. For research use only.**

Tel: 609-228-6898

Fax: 609-228-5909

E-mail: tech@MedChemExpress.com

Address: 1 Deer Park Dr, Suite Q, Monmouth Junction, NJ 08852, USA