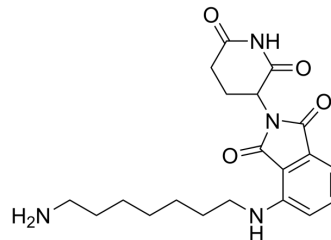


Pomalidomide-C7-NH2

Cat. No.:	HY-155560
CAS No.:	2093387-55-2
Molecular Formula:	C ₂₀ H ₂₆ N ₄ O ₄
Molecular Weight:	386.44
Target:	E3 Ligase Ligand-Linker Conjugates
Pathway:	PROTAC
Storage:	Please store the product under the recommended conditions in the Certificate of Analysis.



BIOLOGICAL ACTIVITY

Description

Pomalidomide-C7-NH2 (Pomalidomide 4'-alkylC7-amine) (Compound 24g) is an E3 Ligase Ligand-Linker Conjugates consisting of Pomalidomide (HY-10984) and a linker. Pomalidomide-C7-NH2 can be used for synthesis of PROTACs^[1].

REFERENCES

[1]. Li Y, et al. Discovery of MD-224 as a First-in-Class, Highly Potent, and Efficacious Proteolysis Targeting Chimera Murine Double Minute 2 Degradable Capable of Achieving Complete and Durable Tumor Regression. *J Med Chem.* 2019 Jan 24;62(2):448-466.

Caution: Product has not been fully validated for medical applications. For research use only.

Tel: 609-228-6898

Fax: 609-228-5909

E-mail: tech@MedChemExpress.com

Address: 1 Deer Park Dr, Suite Q, Monmouth Junction, NJ 08852, USA