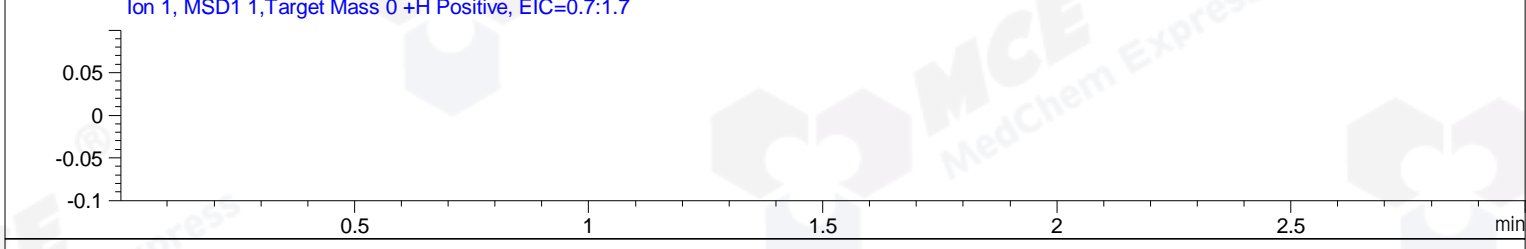
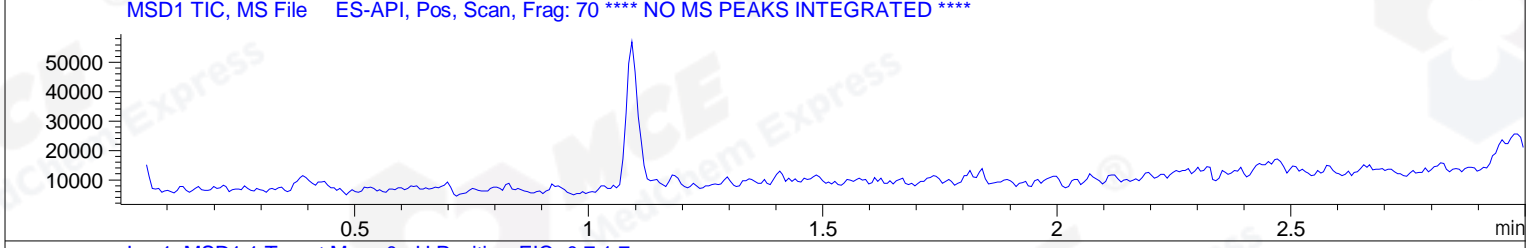
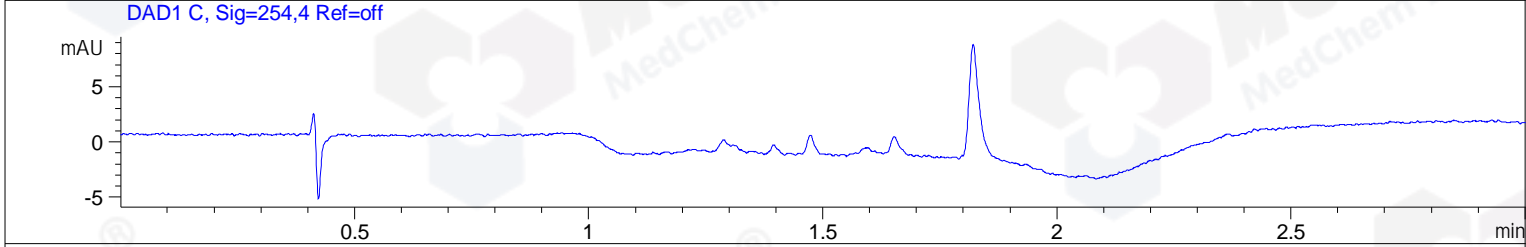
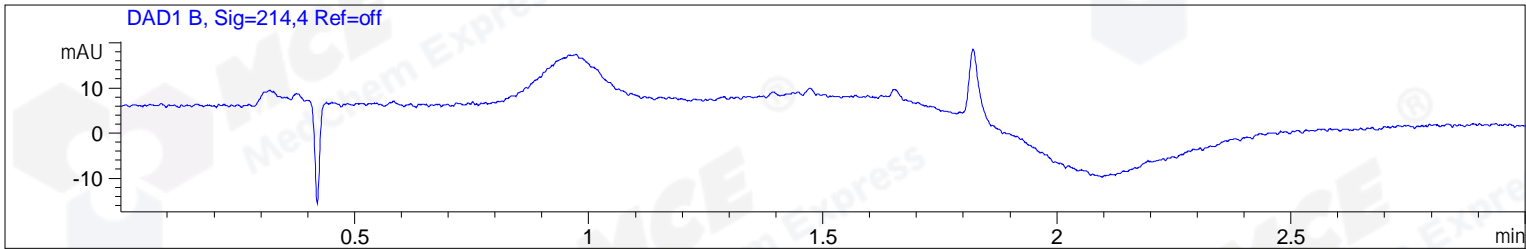


File D:\CHEM32\1\DATA\2019\20191023\735\BLANK-2.D Tgt Mass (CHM):
 Injection Date : 23 Oct 19 12:46 pm +0800 Seq. Line : 49
 Sample Name : BLANK Location : P1-F-07
 Acq. Operator : ZJ_1432 Inj : 2
 Spec. Reported : MS Integration Inj Volume : 1 ul
 Acq. Method : D:\Chem32\1\data\2019\20191023\735\1-POS-3MIN.M
 Analysis Method : D:\CHEM32\1\DATA\2019\20191023\735\1-POS-3MIN.M
 Catalog No : HY-15559 Batch# 22494
 Method Info : Mobile Phase: A: water(0.01%TFA) B:ACN(0.01%TFA)
 Gradient: 5% to 95%B within 1.3 min
 Flow Rate :1.8ml/min
 Column :SunFire C18, 4.6*50mm,3.5um A-RP-433
 Oven Temperature : 45



Integration Results for DAD1 B, Sig=214,4 Ref=off

RetTim	Width	Area	Height	Area%	MS (+)
--------	-------	------	--------	-------	--------

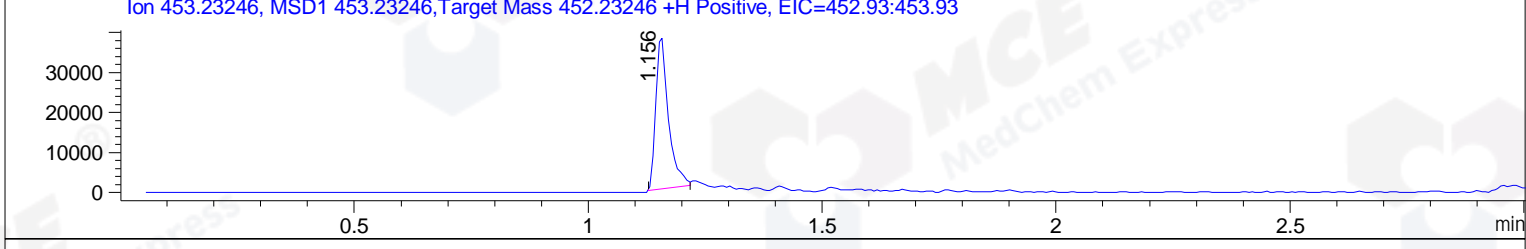
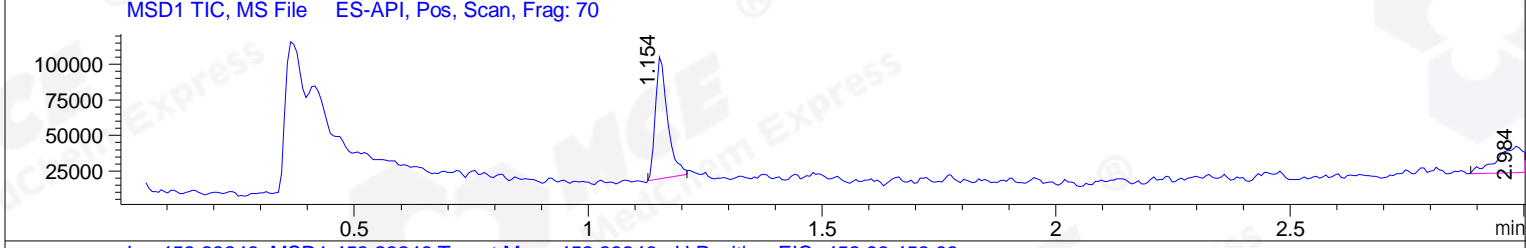
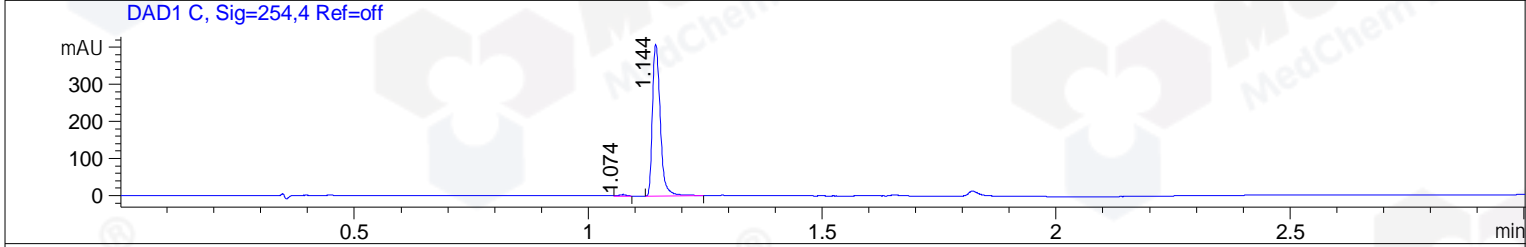
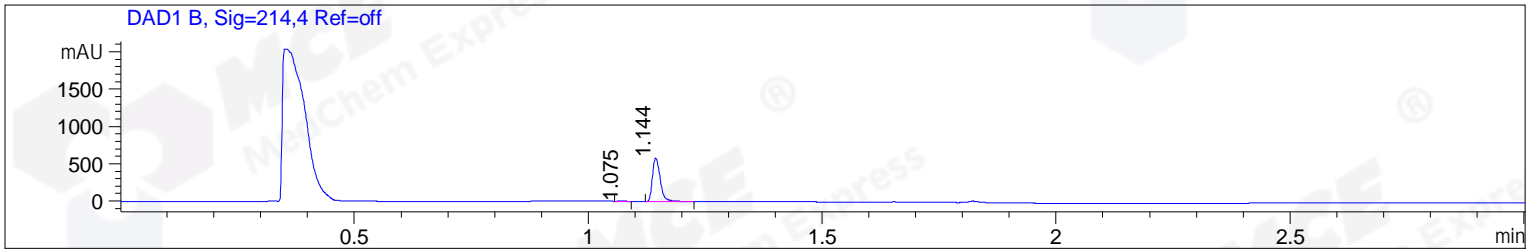
Integration Results for DAD1 C, Sig=254,4 Ref=off

RetTim	Width	Area	Height	Area%	MS (+)
--------	-------	------	--------	-------	--------

Integration Results for MSD1 TIC, MS File

RetTim	Width	Area	Height	Area%	MS (+)
--------	-------	------	--------	-------	--------

File ..DATA\2019\20191023\735\CPK2019-O22-22494-.D Tgt Mass (CHM):
 Injection Date : 23 Oct 19 10:41 am +0800 Seq. Line : 25
 Sample Name : CPK2019-O22-22494 Location : P1-F-04
 Acq. Operator : ZJ_1432 Inj : 1
 Spec. Reported : MS Integration Inj Volume : 1.5 ul
 Acq. Method : D:\Chem32\1\data\2019\20191023\735\1-POS-3MIN.M
 Analysis Method : D:\CHEM32\1\DATA\2019\20191023\735\1-POS-3MIN.M
 Catalog No : HY-15559 Batch# 22494
 Method Info : Mobile Phase: A: water(0.01%TFA) B:ACN(0.01%TFA)
 Gradient: 5% to 95%B within 1.3 min
 Flow Rate :1.8ml/min
 Column :SunFire C18, 4.6*50mm,3.5um A-RP-433
 Oven Temperature : 45



Integration Results for DAD1 B, Sig=214,4 Ref=off

RetTim	Width	Area	Height	Area%	MS (+)
1.07	0.02	5.46	5.22	0.80	157
1.14	0.02	675.42	582.67	99.20	453

Integration Results for DAD1 C, Sig=254,4 Ref=off

RetTim	Width	Area	Height	Area%	MS (+)
1.07	0.02	3.63	3.65	0.76	157
1.14	0.02	476.40	409.09	99.24	453

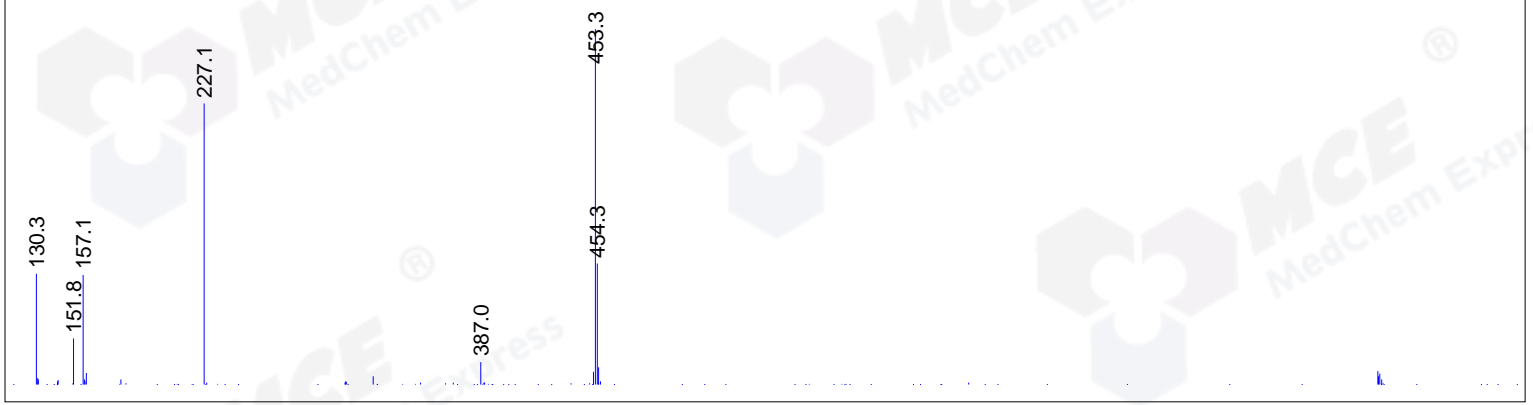
Integration Results for MSD1 TIC, MS File

RetTim	Width	Area	Height	Area%	MS (+)
1.15	0.03	156283.50	87323.98	68.94	453
2.98	0.06	70414.28	18631.18	31.06	157

Ret. Time: 1.15

<<<< POSITIVE SPECTRA >>>>

ES-API Positive



Ret. Time: 2.98

ES-API Positive

