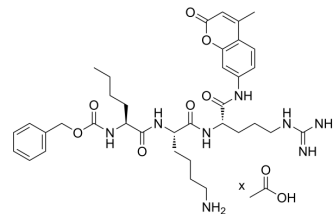


Z-Nle-Lys-Arg-AMC acetate

Cat. No.:	HY-155667A
Molecular Formula:	C ₃₆ H ₅₀ N ₈ O ₇ ·xC ₂ H ₄ O ₂
Target:	Cathepsin
Pathway:	Metabolic Enzyme/Protease
Storage:	Sealed storage, away from moisture and light, under nitrogen
	Powder -80°C 2 years
	-20°C 1 year



* In solvent : -80°C, 6 months; -20°C, 1 month (sealed storage, away from moisture and light, under nitrogen)

SOLVENT & SOLUBILITY

In Vitro	H ₂ O : ≥ 100 mg/mL * "≥" means soluble, but saturation unknown.
-----------------	--

BIOLOGICAL ACTIVITY

Description	Z-Nle-Lys-Arg-AMC acetate is a fluorogenic peptide substrate that specifically monitors cathepsin B activity over a broad pH range ^[1] .
--------------------	---

REFERENCES

[1]. Yoon MC, et al. Distinct Cleavage Properties of Cathepsin B Compared to Cysteine Cathepsins Enable the Design and Validation of a Specific Substrate for Cathepsin B over a Broad pH Range. *Biochemistry*. 2023 Aug 1;62(15):2289-2300.

Caution: Product has not been fully validated for medical applications. For research use only.

Tel: 609-228-6898

Fax: 609-228-5909

E-mail: tech@MedChemExpress.com

Address: 1 Deer Park Dr, Suite Q, Monmouth Junction, NJ 08852, USA