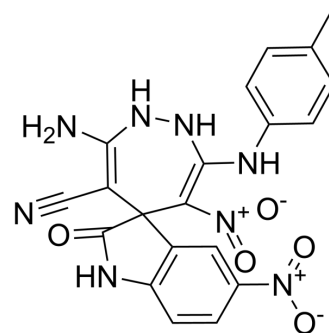


AChe-IN-35

Cat. No.:	HY-155714
Molecular Formula:	C ₂₀ H ₁₆ N ₈ O ₅
Molecular Weight:	448.39
Target:	Cholinesterase (ChE)
Pathway:	Neuronal Signaling
Storage:	Please store the product under the recommended conditions in the Certificate of Analysis.



BIOLOGICAL ACTIVITY

Description	ACHe-IN-35 (compound 5g) is an AChE inhibitor with the IC ₅₀ of 5.88 μM ^[1] .
IC ₅₀ & Target	ACHe 5.88 μM (IC ₅₀)

REFERENCES

[1]. Pourtaher H, et al. The anti-Alzheimer potential of novel spiroindolin-1,2-diazepine derivatives as targeted cholinesterase inhibitors with modified substituents. Sci Rep. 2023;13(1):11952.

Caution: Product has not been fully validated for medical applications. For research use only.

Tel: 609-228-6898

Fax: 609-228-5909

E-mail: tech@MedChemExpress.com

Address: 1 Deer Park Dr, Suite Q, Monmouth Junction, NJ 08852, USA