

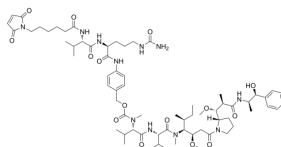
## VcMMAE

|                |   |
|----------------|---|
| Cat. No.:      | HY-15575  |
| CAS No.:       | 646502-53-6   |
| Batch No.:     | 316558  |
| Chemical Name: | L-Valinamide, N-[[[4-[[N-[6-(2,5-dihydro-2,5-dioxo-1H-pyrrol-1-yl)-1-oxohexyl]-L-valyl-N5-(amino carbonyl)-L-ornithyl]amino]phenyl]methoxy]carbonyl]-N-methyl-L-valyl-N-[(1S,2R)-4-[(2S)-2-[(1R,2R)-3-[[[(1R,2S)-2-hydroxy-1-methyl-2-phenylethyl]amino]-1-methoxy-2-methyl-3-oxopropyl]-1-pyrrolidiny]-2-methoxy-1-[(1S)-1-methylpropyl]-4-oxobutyl]-N-methyl- |

## PHYSICAL AND CHEMICAL PROPERTIES

|                    |  |
|--------------------|--|
| Molecular Formula: | C <sub>68</sub> H <sub>105</sub> N <sub>11</sub> O <sub>15</sub>   |
| Molecular Weight:  | 1316.63  |
| Storage:           | -20°C, sealed storage, away from moisture and light<br>* The compound is unstable in solutions, freshly prepared is recommended. |

### Chemical Structure:



## ANALYTICAL DATA

|                              | Specification              | Result                    |
|------------------------------|----------------------------|---------------------------|
| Appearance:                  | White to off-white (Solid) | White (Solid)             |
| <sup>1</sup> H NMR Spectrum: | Consistent with structure  | Consistent with structure |
| LCMS:                        | Consistent with structure  | Consistent with structure |
| MeOH:                        | ≤ 3000 ppm                 | N.D                       |
| EtOH:                        | ≤ 3000 ppm                 | N.D                       |
| ACN:                         | ≤ 410 ppm                  | N.D                       |
| DCM:                         | ≤ 600 ppm                  | N.D                       |
| MTBE:                        | ≤ 5000 ppm                 | N.D                       |
| n-hexane:                    | ≤ 290 ppm                  | N.D                       |
| EA:                          | ≤ 720 ppm                  | N.D                       |
| Dioxane:                     | ≤ 380 ppm                  | N.D                       |
| Pyridine:                    | ≤ 200 ppm                  | N.D                       |
| DMF:                         | ≤ 880 ppm                  | N.D                       |
| DIPEA:                       | ≤ 1000 ppm                 | N.D                       |
| DMAC:                        | ≤ 1090 ppm                 | N.D                       |

---

|               |   |
|---------------|---|
| Water(KF):    | 1.59%   |
| PH:           | 5.5   |
| Purity(HPLC): | 99.94%  |
| Assay:        | 98.35%  |
| Conclusion:   | The product has been tested and complies with the given specifications. |

**Caution: Product has not been fully validated for medical applications. For research use only.**

Tel: 609-228-6898

Fax: 609-228-5909

E-mail: [tech@MedChemExpress.com](mailto:tech@MedChemExpress.com)

Address: 1 Deer Park Dr, Suite Q, Monmouth Junction, NJ 08852, USA