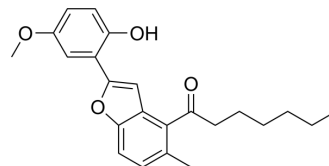


hCES2A-IN-1

Cat. No.:	HY-155755
Molecular Formula:	C ₂₃ H ₂₆ O ₄
Molecular Weight:	366.45
Target:	Others
Pathway:	Others
Storage:	Please store the product under the recommended conditions in the Certificate of Analysis.



BIOLOGICAL ACTIVITY

Description	hCES2A-IN-1 (compound 20w) is a potent hCES2A inhibitor, with an IC ₅₀ value of 1.6 nM. hCES2A-IN-1, a bysspectin A derivative, shows an approximately 1000-fold improvement over the lead compound bysspectin A ^[1] .
IC₅₀ & Target	hCES2A (0.0016 ± 0.00034 μM), hCES1A (7.26 ± 0.94 μM) ^[1]
In Vitro	hCES2A-IN-1 (compound 20w) exhibits very weak cytotoxicity to the HepG2 cells at concentration less than 10 μM ^[1] . hCES2A-IN-1 can inhibit hCES2A-mediated NCEN hydrolysis in living cells in a dose-dependent manner with an IC ₅₀ value of 0.052 μM, which showed significantly higher inhibition activity than Loperamide with an IC ₅₀ value of 1.44 μM ^[1] . hCES2A-IN-1 (compound 20w) exhibits favorable metabolic stability. The half-life of compound 20w in phase I or phase II metabolic systems in human liver microsomes are 125.96 min and 97.38 min, respectively ^[1] . MCE has not independently confirmed the accuracy of these methods. They are for reference only.

REFERENCES

[1]. Li W, et al. New bysspectin A derivatives as potent inhibitors of human carboxylesterase 2A. Eur J Med Chem. 2023 Nov 5;259:115708.

Caution: Product has not been fully validated for medical applications. For research use only.

Tel: 609-228-6898

Fax: 609-228-5909

E-mail: tech@MedChemExpress.com

Address: 1 Deer Park Dr, Suite Q, Monmouth Junction, NJ 08852, USA