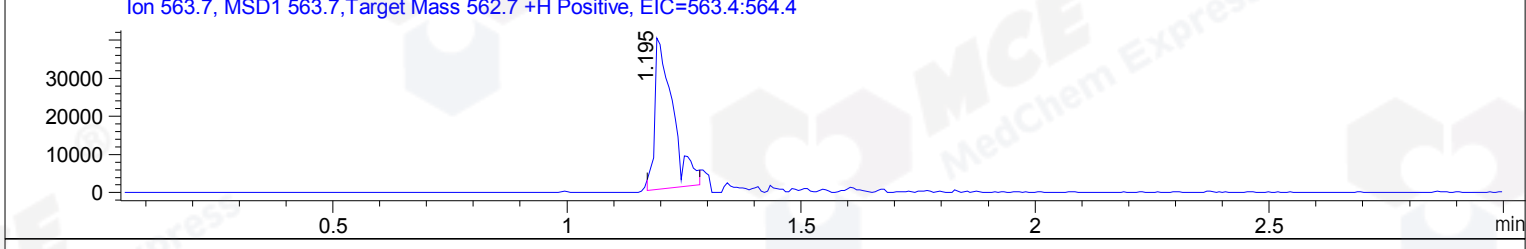
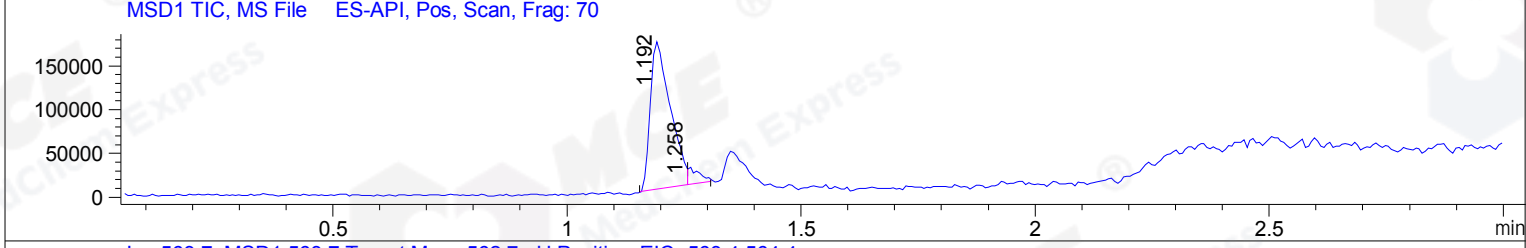
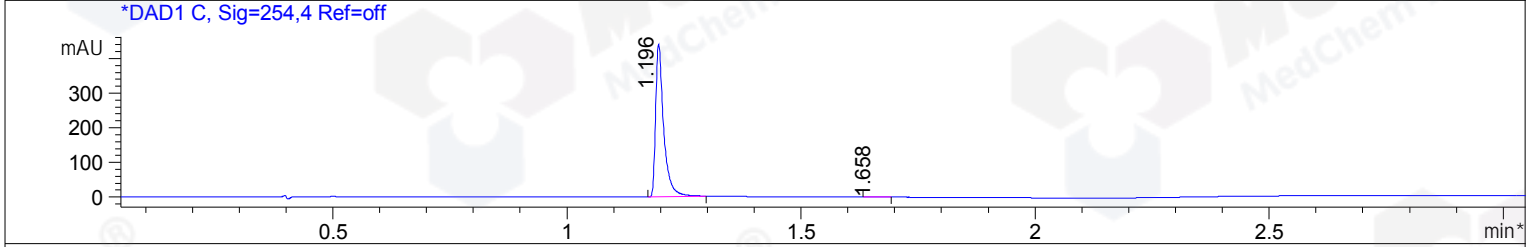
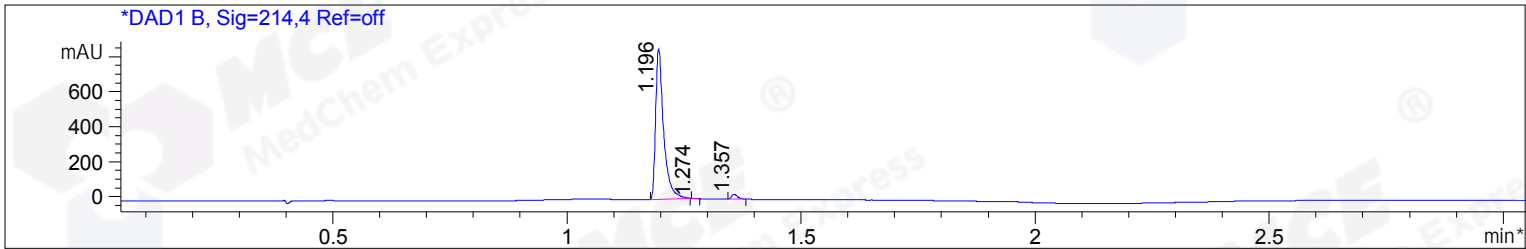


File D:\CHEM32\1\DATA\CPK\CPK2017-121-13239.D Tgt Mass (EZX): 562.70
 Injection Date : 21 Jan 17 1:50 pm +0800 Seq. Line : 0
 Sample Name : CPK2017-121-13239 Location : P2-C-07
 Acq. Operator : GZZ_718 Inj : 1
 Spec. Reported : MS Integration Inj Volume : 1 ul
 Acq. Method : D:\Chem32\1\METHODS\1-POS-3MIN.M
 Analysis Method : D:\CHEM32\1\METHODS\1-POS-3MIN-PROSRSS.M
 Catalog No: HY-15593 Batch#13239 Easy-Access Method: '1-POS-3MIN' 562.70
 Method Info : Mobile Phase: A: water(0.01%TFA) B:ACN(0.01%TFA)
 Gradient: 5% to 95%B within 1.3 min
 Flow Rate :1.8ml/min
 Column :SunFire C18, 4.6*50mm,3.5um A-RP-186
 Oven Temperature : 45C



Integration Results for DAD1 B, Sig=214,4 Ref=off

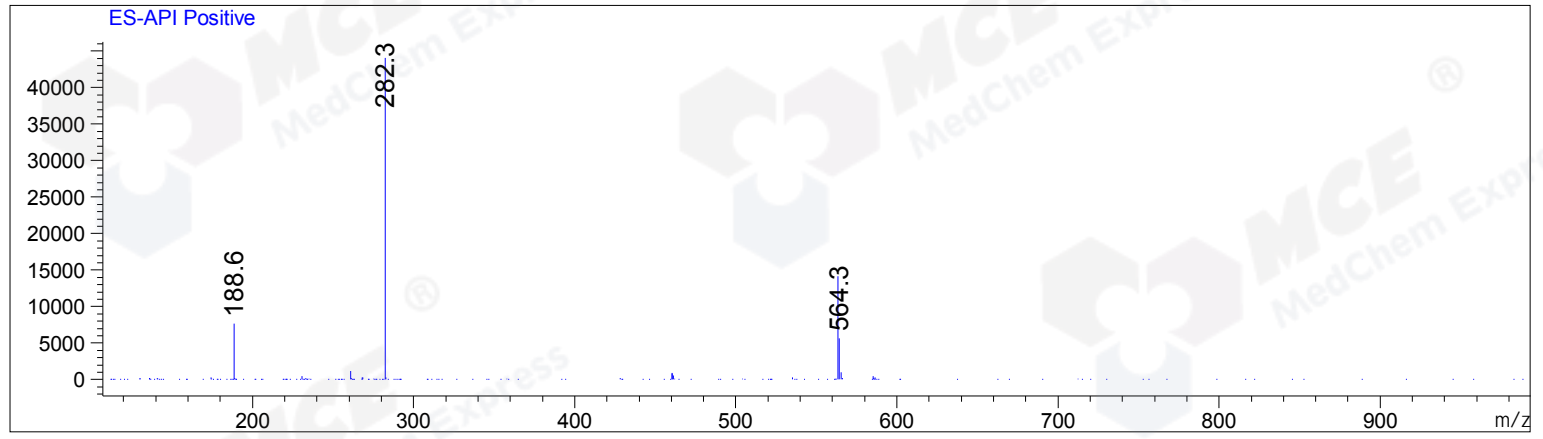
RetTim	Width	Area	Height	Area%	MS (+)
1.20	0.02	1019.50	859.72	97.47	282
1.27	0.01	1.22	1.60	0.12	563
1.36	0.01	25.21	28.18	2.41	218

Integration Results for DAD1 C, Sig=254,4 Ref=off

RetTim	Width	Area	Height	Area%	MS (+)
1.20	0.02	529.52	441.32	99.75	282
1.66	0.03	1.33	0.65	0.25	233

Ret. Time: 1.19

<<<< POSITIVE SPECTRA >>>>



Ret. Time: 1.26

