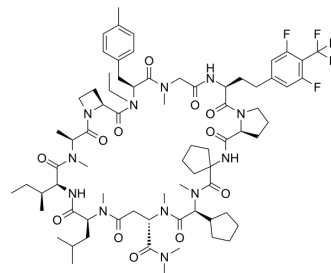


LUNA18

Cat. No.:	HY-156002
CAS No.:	2676177-63-0
Molecular Formula:	C ₇₃ H ₁₀₅ F ₅ N ₁₂ O ₁₂
Molecular Weight:	1437.68
Target:	Ras
Pathway:	GPCR/G Protein; MAPK/ERK Pathway
Storage:	Sealed storage, away from moisture and light, under nitrogen
	Powder -80°C 2 years
	-20°C 1 year
	* In solvent : -80°C, 6 months; -20°C, 1 month (sealed storage, away from moisture and light, under nitrogen)



SOLVENT & SOLUBILITY

In Vitro

DMSO : ≥ 100 mg/mL (69.56 mM)

* "≥" means soluble, but saturation unknown.

Preparing Stock Solutions	Solvent		Mass		
	Concentration		1 mg	5 mg	10 mg
	1 mM		0.6956 mL	3.4778 mL	6.9557 mL
	5 mM		0.1391 mL	0.6956 mL	1.3911 mL
	10 mM		0.0696 mL	0.3478 mL	0.6956 mL

Please refer to the solubility information to select the appropriate solvent.

BIOLOGICAL ACTIVITY

Description

LUNA18 is an orally active KRAS inhibitor with an IC₅₀ of <2 nM against KRAS^{G12D}-SOS. LUNA18 can be used for the research of cancer^[1].

IC₅₀ & Target

IC₅₀: <2 nM (KRAS^{G12D}-SOS)^[1]
0.043 nM (KRAS^{G12D})^[1]

REFERENCES

[1]. Tanada M, et al. Development of Orally Bioavailable Peptides Targeting an Intracellular Protein: From a Hit to a Clinical KRAS Inhibitor. J Am Chem Soc. 2023 Aug 2;145(30):16610-16620.

Caution: Product has not been fully validated for medical applications. For research use only.

Tel: 609-228-6898

Fax: 609-228-5909

E-mail: tech@MedChemExpress.com

Address: 1 Deer Park Dr, Suite Q, Monmouth Junction, NJ 08852, USA