

## CDFI

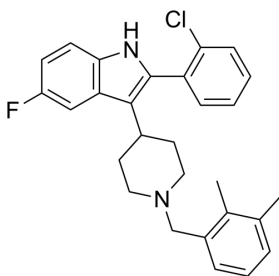
---

Cat. No.: HY-156009  
CAS No.: 1199797-92-6  
Batch No.: 345745  
Chemical Name: 1H-Indole, 2-(2-chlorophenyl)-3-[1-[(2,3-dimethylphenyl)methyl]-4-piperidinyl]-5-fluoro-

### PHYSICAL AND CHEMICAL PROPERTIES

Molecular Formula: C<sub>28</sub>H<sub>28</sub>ClFN<sub>2</sub>  
Molecular Weight: 446.99  
Storage: Powder      -20°C    3 years  
                                  4°C      2 years  
                                  In solvent   -80°C    6 months  
  -20°C    1 month

Chemical Structure:



### ANALYTICAL DATA

Appearance: White to off-white (Solid)  
<sup>1</sup>H NMR Spectrum: Consistent with structure  
LCMS: Consistent with structure  
Purity (HPLC): 99.83%  
Conclusion: The product has been tested and complies with the given specifications.

**Caution: Product has not been fully validated for medical applications. For research use only.**

Tel: 609-228-6898

Fax: 609-228-5909

E-mail: tech@MedChemExpress.com

Address: 1 Deer Park Dr, Suite Q, Monmouth Junction, NJ 08852, USA