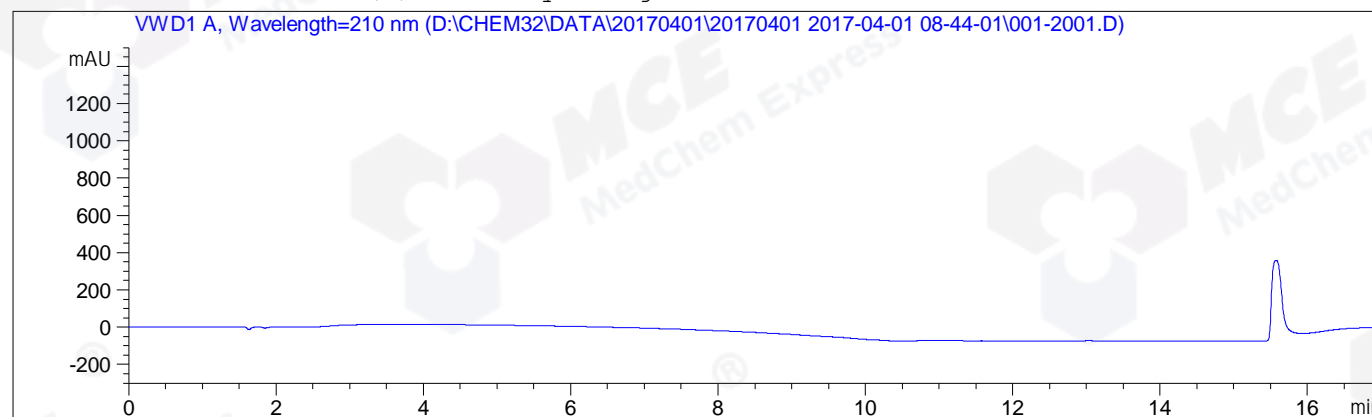


=====
Acq. Operator : ZHT(HPLC-09) Seq. Line : 20
Acq. Instrument : Instrument 1 Location : Vial 1
Injection Date : 4/1/2017 2:30:44 PM Inj : 1
Inj Volume : 5.000 µl
Acq. Method : D:\CHEM32\DATA\20170401\20170401 2017-04-01 08-44-01\30-90A,210NM,BC.M
Last changed : 12/14/2016 9:42:49 AM by LCY(HPLC-09)
Analysis Method : D:\CHEM32\METHODS\RP-HPLC\10-80A(210NM)BC.M
Last changed : 4/1/2017 3:30:20 PM by ZHT(HPLC-09)
(modified after loading)
Catalog No : HY-15601 Batch#24122
A-RP-199

Additional Info : Peak(s) manually integrated



=====
Area Percent Report
=====

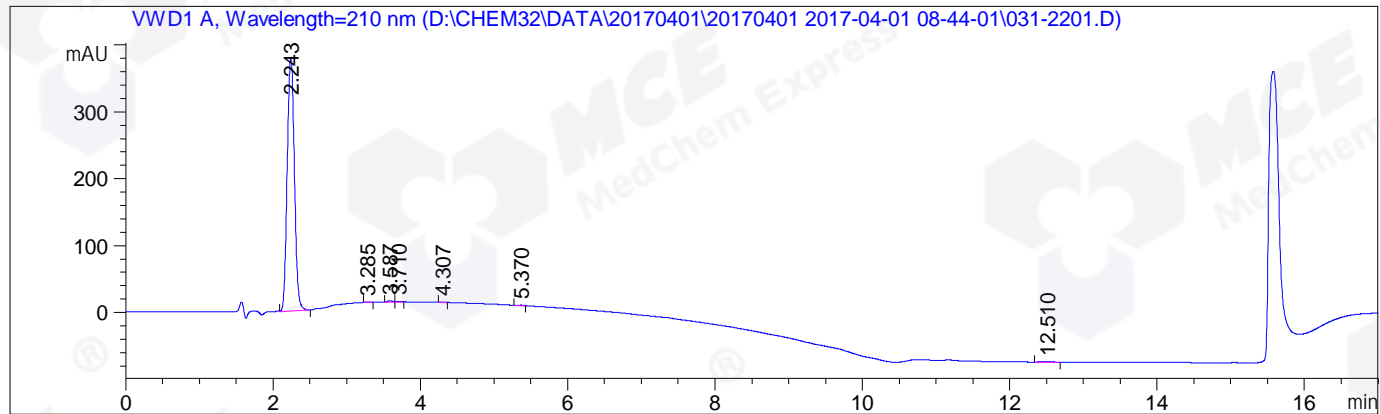
Sorted By : Signal
Multiplier: : 1.0000
Dilution: : 1.0000
Use Multiplier & Dilution Factor with ISTDs

No peaks found

=====
*** End of Report ***

=====
Acq. Operator : ZHT(HPLC-09) Seq. Line : 22
Acq. Instrument : Instrument 1 Location : Vial 31
Injection Date : 4/1/2017 3:07:36 PM Inj : 1
Inj Volume : 5.000 µl
Acq. Method : D:\CHEM32\DATA\20170401\20170401 2017-04-01 08-44-01\30-90A,210NM,BC.M
Last changed : 12/14/2016 9:42:49 AM by LCY(HPLC-09)
Analysis Method : D:\CHEM32\METHODS\RP-HPLC\10-80A(210NM)BC.M
Last changed : 4/1/2017 3:41:58 PM by ZHT(HPLC-09)
(modified after loading)
Catalog No : HY-15601 Batch#24122
A-RP-199

Additional Info : Peak(s) manually integrated



=====
Area Percent Report
=====

Sorted By : Signal
Multiplier: : 1.0000
Dilution: : 1.0000
Use Multiplier & Dilution Factor with ISTDs

Signal 1: VWD1 A, Wavelength=210 nm

Peak #	RetTime [min]	Type	Width [min]	Area [mAU*s]	Height [mAU]	Area %
1	2.243	MM	0.1126	2561.33325	378.99753	98.7797
2	3.285	MM	0.0796	3.75241	7.85829e-1	0.1447
3	3.587	MF	0.0735	9.16365	2.07820	0.3534
4	3.710	FM	0.0740	4.84684	1.09137	0.1869
5	4.307	MM	0.0614	2.90101	7.86878e-1	0.1119
6	5.370	MM	0.0868	3.97379	7.62621e-1	0.1533
7	12.510	MF	0.1663	7.00380	7.01742e-1	0.2701

Totals : 2592.97475 385.20416

=====
*** End of Report ***