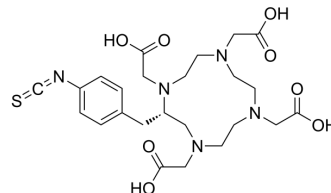


## (S)-p-SCN-Bn-DOTA

Cat. No.:	HY-156038
CAS No.:	1020407-41-3
Molecular Formula:	C <sub>24</sub> H <sub>33</sub> N <sub>5</sub> O <sub>8</sub> S
Molecular Weight:	551.61
Target:	Biochemical Assay Reagents
Pathway:	Others
Storage:	Please store the product under the recommended conditions in the Certificate of Analysis.



### BIOLOGICAL ACTIVITY

#### Description

(S)-p-SCN-Bn-DOTA is a bifunctional chelator (Bifunctional Chelator; BFC) and a macrocyclic DOTA derivative used for tumor pre-targeting. (S)-p-SCN-Bn-DOTA can be used for conjugation of peptides and radionuclides.

**Caution: Product has not been fully validated for medical applications. For research use only.**

Tel: 609-228-6898

Fax: 609-228-5909

E-mail: [tech@MedChemExpress.com](mailto:tech@MedChemExpress.com)

Address: 1 Deer Park Dr, Suite Q, Monmouth Junction, NJ 08852, USA