

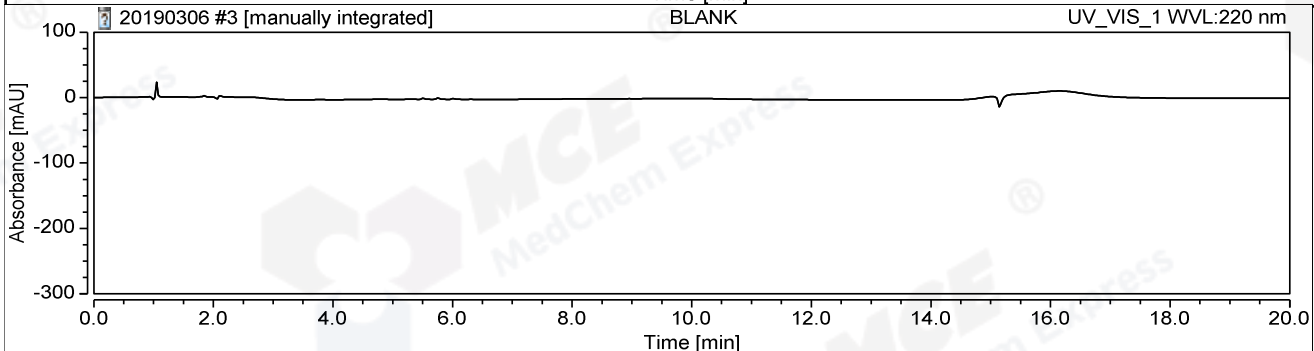
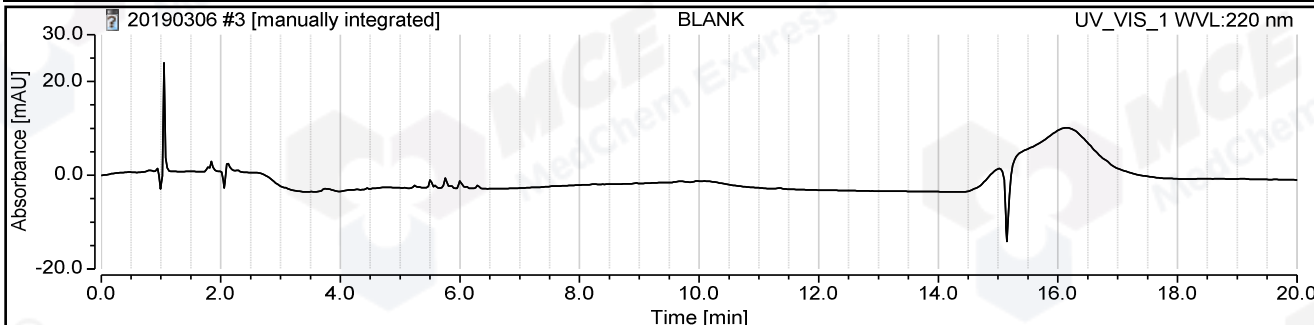
### Chromatogram and Results

#### Injection Details

Injection Name:	<b>BLANK</b>	Injection Volume:	<b>5.00</b>
Vial Number:	<b>GC7</b>	Channel:	<b>UV_VIS_1</b>
Injection Type:	<b>Unknown</b>	Wavelength:	<b>220</b>
Calibration Level:		Users:	<b>zqq</b>
Instrument Method:	<b>10-80B,15MIN</b>	Dilution Factor:	<b>1.0000</b>
Processing Method:	<b>New Processing Method</b>	Sample Weight:	<b>1.0000</b>
Injection Date/Time:	<b>06/Mar/19 11:03</b>	Run Time (min):	<b>20.00</b>
Catalog No:	<b>HY-15605 Batch#12501</b>		

chrom://hy261/ChromeleonLocal/Chemistry Analy/201903/20190306.seq/265.smp/UV\_VIS\_1.channel/UV\_VIS\_1.chm

#### Chromatogram



#### Integration Results

No.	Peak Name	Retention Time min	Area mAU*min	Height mAU	Asymmetry (EP)	Resolution (EP)	Rel.Area %
<b>Total:</b>			<b>0.000</b>	<b>0.000</b>	<b>0.00</b>	<b>0.00</b>	

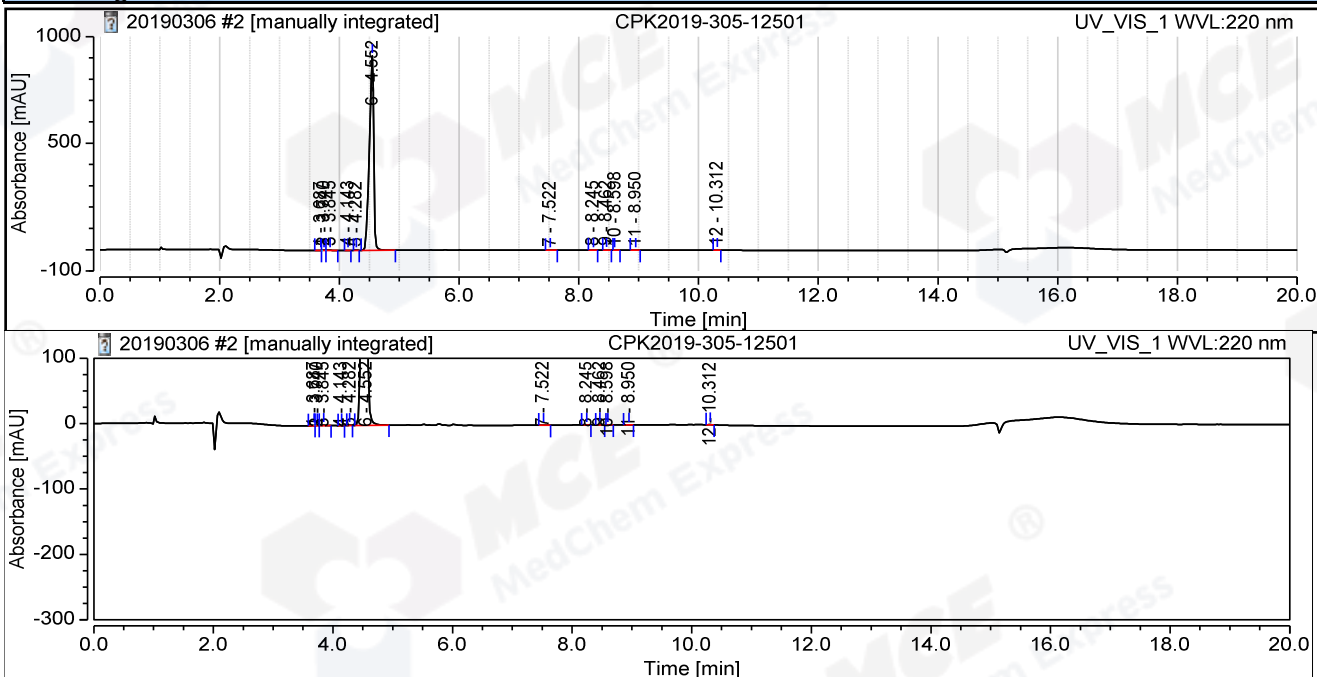
### Chromatogram and Results

#### Injection Details

<b>Injection Name:</b> CPK2019-305-12501	<b>Injection Volume:</b> 5.00
<b>Vial Number:</b> GC8	<b>Channel:</b> UV_VIS_1
<b>Injection Type:</b> Unknown	<b>Wavelength:</b> 220
<b>Calibration Level:</b>	<b>Users:</b> zqq
<b>Instrument Method:</b> 10-80B,15MIN	<b>Dilution Factor:</b> 1.0000
<b>Processing Method:</b> New Processing Method	<b>Sample Weight:</b> 1.0000
<b>Injection Date/Time:</b> 06/Mar/19 10:42	<b>Run Time (min):</b> 20.00
<b>Catalog No:</b> HY-15605 Batch#12501	

chrom://hy261/ChromeleonLocal/Chemistry Analy/201903/20190306.seq/965.smp/UV\_VIS\_1.channel/UV\_VIS\_1.chm

#### Chromatogram



#### Integration Results

No.	Peak Name	Retention Time min	Area mAU*min	Height mAU	Asymmetry (EP)	Resolution (EP)	Rel.Area %
1		3.687	0.029	0.530	n.a.	n.a.	0.04
2		3.740	0.042	0.644	n.a.	n.a.	0.06
3		3.845	0.074	0.845	n.a.	n.a.	0.10
4		4.143	0.005	0.162	0.88	2.27	0.01
5		4.282	0.025	0.618	0.99	2.81	0.03
6		4.552	74.056	911.743	0.72	21.79	99.63
7		7.522	0.014	0.159	1.08	5.96	0.02
8		8.245	0.007	0.110	0.95	2.35	0.01
9		8.462	0.040	0.734	1.09	1.76	0.05
10		8.598	0.002	0.046	1.37	4.55	0.00
11		8.950	0.005	0.104	0.86	15.11	0.01
12		10.312	0.034	0.577	0.94	n.a.	0.05
Total:			74.333	916.272	8.88	56.61	