

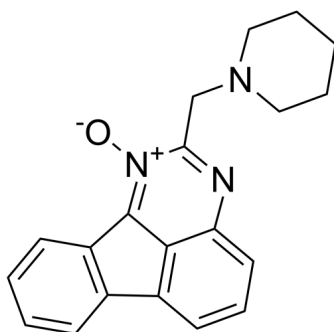
NSC194598

Cat. No.: HY-156135
Batch No.: 346657
CAS No.: 5358-76-9
Molecular Formula: C₂₀H₁₉N₃O

ANALYTICAL DATA

Theoretical: C(75.69%), H(6.03%), N(13.24%)
Result: C(75.52%), H(5.95%), N(13.37%)

Chemical Structure:



Caution: Product has not been fully validated for medical applications. For research use only.

Tel: 609-228-6898

Fax: 609-228-5909

E-mail: tech@MedChemExpress.com

Address: 1 Deer Park Dr, Suite Q, Monmouth Junction, NJ 08852, USA