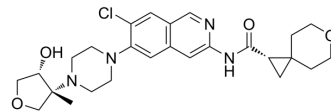


MK-1468

Cat. No.:	HY-156429
CAS No.:	2769107-89-1
Molecular Formula:	C ₂₆ H ₃₃ ClN ₄ O ₄
Molecular Weight:	501.02
Target:	LRRK2
Pathway:	Autophagy
Storage:	Please store the product under the recommended conditions in the Certificate of Analysis.



BIOLOGICAL ACTIVITY

Description

MK-1468 is a high selective and brain-penetrant inhibitor of LRRK2 with an IC₅₀ of 0.8 nM. MK-1468 can be used in study Parkinson's disease^[1].

REFERENCES

[1]. Kattar SD, et al. Discovery of MK-1468: A Potent, Kinome-Selective, Brain-Penetrant Amidoisoquinoline LRRK2 Inhibitor for the Potential Treatment of Parkinson's Disease. *J Med Chem.* 2023 Oct 20.

Caution: Product has not been fully validated for medical applications. For research use only.

Tel: 609-228-6898

Fax: 609-228-5909

E-mail: tech@MedChemExpress.com

Address: 1 Deer Park Dr, Suite Q, Monmouth Junction, NJ 08852, USA