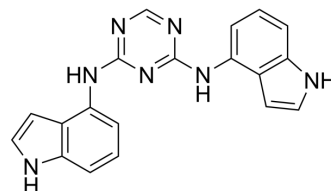


tau protein/ α -synuclein-IN-1

Cat. No.:	HY-156435
Molecular Formula:	C ₁₉ H ₁₅ N ₇
Molecular Weight:	341.37
Target:	α -synuclein
Pathway:	Neuronal Signaling
Storage:	Please store the product under the recommended conditions in the Certificate of Analysis.



BIOLOGICAL ACTIVITY

Description

tau protein/ α -synuclein-IN-1 is a dual inhibitor of tau protein and α -synuclein. tau protein/ α -synuclein-IN-1 reduces α -syn inclusions development in M17D neuroblastoma cells. tau protein/ α -synuclein-IN-1 can be used in study Alzheimer's disease [1].

REFERENCES

[1]. Ramirez E, et al. Evaluation of N- and O-Linked Indole Triazines for a Dual Effect on α -Synuclein and Tau Aggregation. ACS Chem Neurosci. 2023 Nov 1;14(21):3913-3927.

Caution: Product has not been fully validated for medical applications. For research use only.

Tel: 609-228-6898

Fax: 609-228-5909

E-mail: tech@MedChemExpress.com

Address: 1 Deer Park Dr, Suite Q, Monmouth Junction, NJ 08852, USA