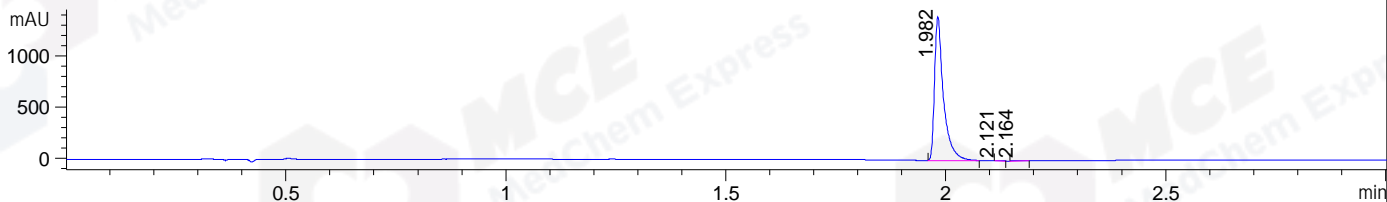
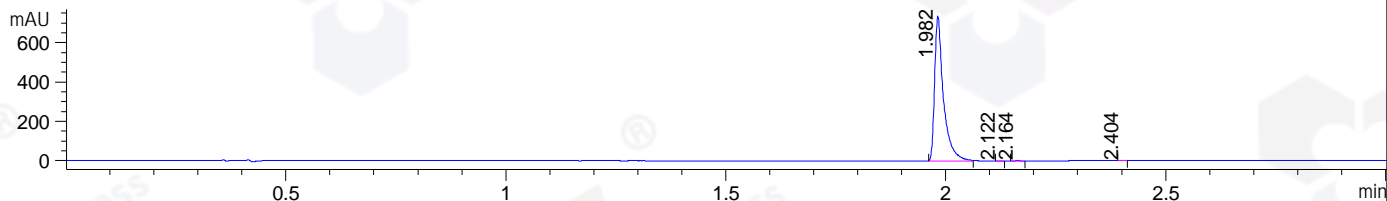


File ..\DATA\2019\20190505\560\CPK2019-430-21825.D Tgt Mass (CHM):
Injection Date : 5 May 19 2:34 pm +0800 Seq. Line : 19
Sample Name : CPK2019-430-21825 Location : P1-B-02
Acq. Operator : LQ_1052 Inj : 1
Spec. Reported : MS Integration Inj Volume : 3 ul
Acq. Method : D:\Chem32\1\data\2019\20190505\560\1-POS-3MIN-1.M
Analysis Method : D:\CHEM32\1\DATA\2019\20190505\560\1-POS-3MIN-1.M
Catalog No : HY-15647 Batch#21825 BY ACN
Method Info : Mobile Phase: A: water(0.01%TFA) B:ACN(0.01%TFA)
Gradient: 5% to 95%B within 1.3 min
Flow Rate :1.8ml/min
Column :SunFire C18, 4.6*50mm,3.5um A-RP-322
Oven Temperature : 45

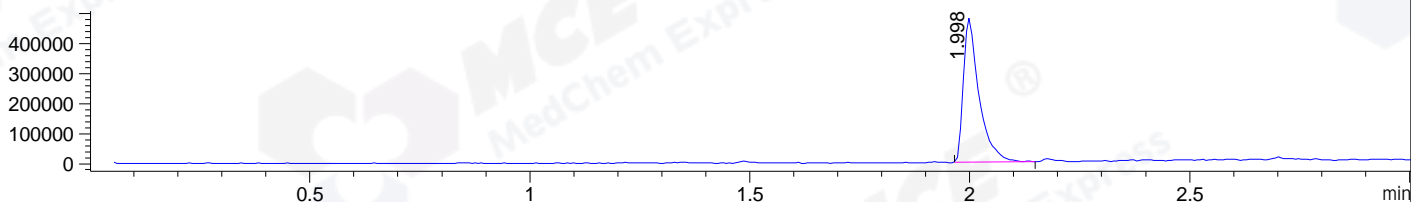
DAD1 B, Sig=214,4 Ref=off



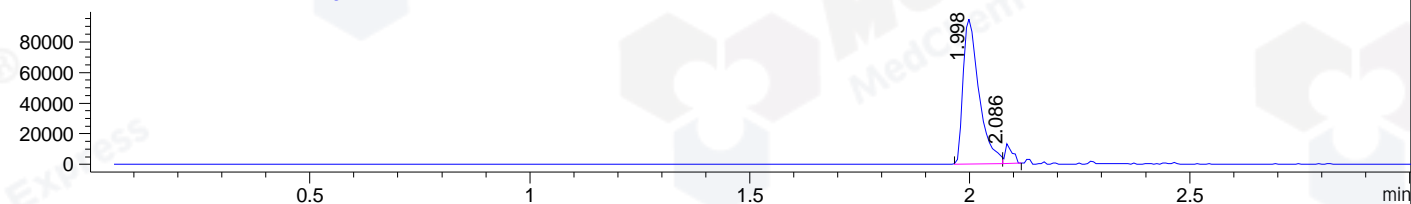
DAD1 C, Sig=254,4 Ref=off



MSD1 TIC, MS File ES-API, Pos, Scan, Frag: 70



Ion 400.5, MSD1 400.5, Target Mass 399.5 +H Positive, EIC=400.2:401.2



Integration Results for DAD1 B, Sig=214,4 Ref=off

RetTim	Width	Area	Height	Area%	MS (+)
1.98	0.02	2003.33	1411.39	99.71	400
2.12	0.02	1.08	1.04	0.05	400
2.16	0.02	4.83	4.12	0.24	414

Integration Results for DAD1 C, Sig=254,4 Ref=off

RetTim	Width	Area	Height	Area%	MS (+)
1.98	0.02	1031.80	736.48	99.78	400
2.12	0.01	0.31	0.43	0.03	400
2.16	0.02	1.84	1.89	0.18	414
2.40	0.01	0.16	0.24	0.02	400

Integration Results for MSD1 TIC, MS File

RetTim	Width	Area	Height	Area%	MS (+)
2.00	0.04	1193137.75	479961.25	100.00	400

Ret. Time: 2.00

<<<< POSITIVE SPECTRA >>>>

ES-API Positive

