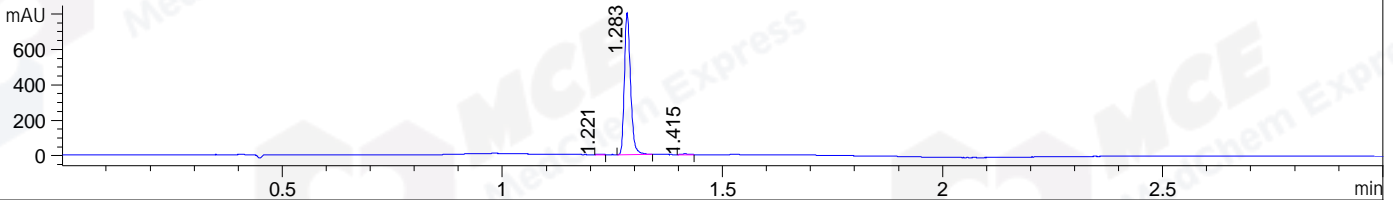
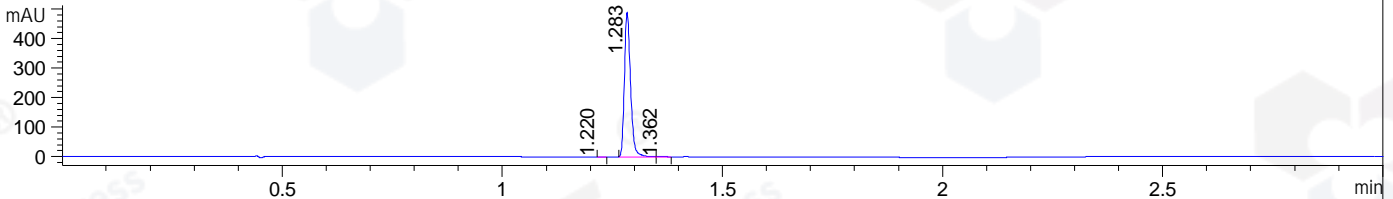


File ..\DATA\2019\20191114\759\CPK2019-N14-23180.D Tgt Mass (CHM):
 Injection Date : 14 Nov 19 3:32 pm +0800 Seq. Line : 78
 Sample Name : CPK2019-N14-23180 Location : P1-C-05
 Acq. Operator : ZJ_1432 Inj : 1
 Spec. Reported : MS Integration Inj Volume : 1 ul
 Acq. Method : D:\Chem32\1\data\2019\20191114\759\1-POS-3MIN.M
 Analysis Method : D:\CHEM32\1\DATA\2019\20191114\759\1-POS-3MIN.M
 Catalog No : HY-15650 Batch#23180
 Method Info : Mobile Phase: A: water(0.01%TFA) B:ACN(0.01%TFA)
 Gradient: 5% to 95%B within 1.3 min
 Flow Rate :1.8ml/min
 Column :SunFire C18, 4.6*50mm,3.5um A-RP-433
 Oven Temperature : 45□

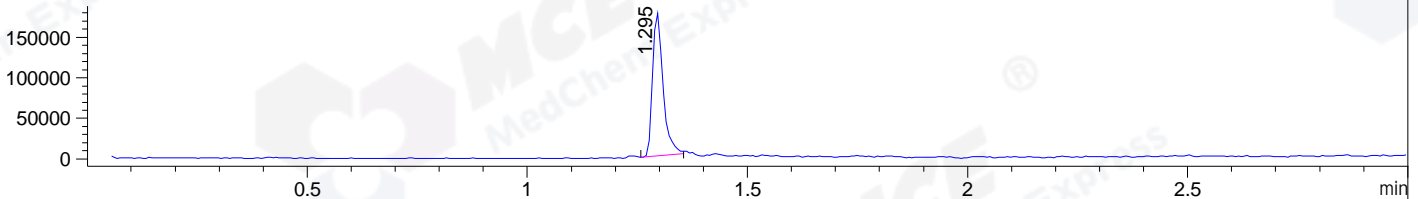
DAD1 B, Sig=214,4 Ref=off



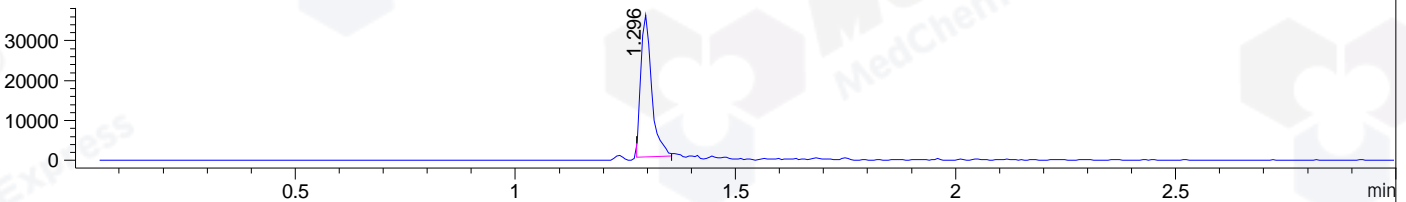
DAD1 C, Sig=254,4 Ref=off



MSD1 TIC, MS File ES-API, Pos, Scan, Frag: 70



Ion 618, MSD1 618, Target Mass 617 +H Positive, EIC=617.7:618.7



Integration Results for DAD1 B, Sig=214,4 Ref=off

RetTim	Width	Area	Height	Area%	MS (+)
1.22	0.01	1.83	2.29	0.23	ND
1.28	0.02	781.58	803.14	99.20	620
1.41	0.02	4.51	4.58	0.57	ND

Integration Results for DAD1 C, Sig=254,4 Ref=off

RetTim	Width	Area	Height	Area%	MS (+)
1.22	0.01	0.27	0.38	0.06	ND
1.28	0.02	478.58	490.75	99.68	620
1.36	0.02	1.27	1.01	0.26	618

Integration Results for MSD1 TIC, MS File

RetTim	Width	Area	Height	Area%	MS (+)
1.29	0.03	290239.34	177220.70	100.00	620

Ret. Time: 1.29

<<<< POSITIVE SPECTRA >>>>

ES-API Positive

