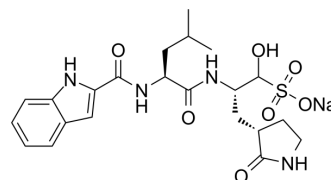


Olgotrelvir sodium

Cat. No.:	HY-156655A
CAS No.:	2763596-72-9
Molecular Formula:	C ₂₂ H ₂₉ N ₄ NaO ₇ S
Molecular Weight:	516.54
Target:	SARS-CoV; Cathepsin
Pathway:	Anti-infection; Metabolic Enzyme/Protease
Storage:	-20°C, sealed storage, away from moisture * In solvent : -80°C, 6 months; -20°C, 1 month (sealed storage, away from moisture)



SOLVENT & SOLUBILITY

In Vitro

H₂O : 50 mg/mL (96.80 mM; Need ultrasonic)

Concentration	Mass			
	1 mg	5 mg	10 mg	
1 mM	1.9360 mL	9.6798 mL	19.3596 mL	
5 mM	0.3872 mL	1.9360 mL	3.8719 mL	
10 mM	0.1936 mL	0.9680 mL	1.9360 mL	

Please refer to the solubility information to select the appropriate solvent.

BIOLOGICAL ACTIVITY

Description

Olgotrelvir sodium is an orally active dual inhibitor of coronavirus main protease (Mpro) and human cell cathepsin (Cathepsin L). Olgotrelvir sodium can effectively inhibit both SARS-CoV-2 replication and entry into host cells^[1].

REFERENCES

[1]. Sorrento Announces the Full Enrollment of the Pivotal Phase 3 Trial with Olgotrelvir (OVYDSOTM) (STI-1558), a Second Generation Oral Mpro Inhibitor, as a Standalone Treatment for COVID-19.

Caution: Product has not been fully validated for medical applications. For research use only.

Tel: 609-228-6898

Fax: 609-228-5909

E-mail: tech@MedChemExpress.com

Address: 1 Deer Park Dr, Suite Q, Monmouth Junction, NJ 08852, USA