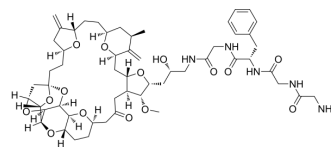


## GGFG-Eribulin

Cat. No.:	HY-156687
CAS No.:	2841688-66-0
Molecular Formula:	C <sub>55</sub> H <sub>77</sub> N <sub>5</sub> O <sub>15</sub>
Molecular Weight:	1048.22
Target:	Drug-Linker Conjugates for ADC
Pathway:	Antibody-drug Conjugate/ADC Related
Storage:	-20°C, protect from light, stored under nitrogen * In solvent : -80°C, 6 months; -20°C, 1 month (protect from light, stored under nitrogen)



### SOLVENT & SOLUBILITY

#### In Vitro

DMSO : ≥ 100 mg/mL (95.40 mM)  
\* "≥" means soluble, but saturation unknown.

Preparing Stock Solutions	Solvent		Mass		
	Concentration		1 mg	5 mg	10 mg
	1 mM		0.9540 mL	4.7700 mL	9.5400 mL
	5 mM		0.1908 mL	0.9540 mL	1.9080 mL
	10 mM		0.0954 mL	0.4770 mL	0.9540 mL

Please refer to the solubility information to select the appropriate solvent.

### BIOLOGICAL ACTIVITY

#### Description

GGFG-Eribulin (Compound GGFG) is a Drug-Linker Conjugates for ADC. GGFG-Eribulin consists of the ADC Cytotoxin Eribulin (HY-13442) and a linker. GGFG-Eribulin can be used for synthesis of ADCs<sup>[1]</sup>.

### REFERENCES

[1]. Huang Jinkun, et al. Preparation method for dual-drug-linker of adc and use thereof. WO2022199429.

**Caution: Product has not been fully validated for medical applications. For research use only.**

Tel: 609-228-6898

Fax: 609-228-5909

E-mail: tech@MedChemExpress.com

Address: 1 Deer Park Dr, Suite Q, Monmouth Junction, NJ 08852, USA