

File ..0210107 2021-01-07 09-16-45\WHW8419-059-8.D Tgt Mass (CHM):

Injection Date : 7 Jan 21 2:28 pm +0800 Seq. Line : 71

Sample Name : WHW8419-059-8 Location : P2-A-08

Acq. Operator : SYSTEM Inj : 1

Spec. Reported : MS Integration Inj Volume : 0.2 ul

Acq. Method : D:\LCMS03\Data\20210107\20210107 2021-01-07 09-16-45\1-POS-UPLC2.0MIN(0.8ML)

Analysis Method : D:\LCMS03\Data\20210107\20210107 2021-01-07 09-16-45\1-POS-UPLC2.0MIN(0.8ML) -

CAS NO. : 1401066-79-2

Method Info : Mobile Phase: A: water(0.01%TFA) B:ACN(0.01%TFA)

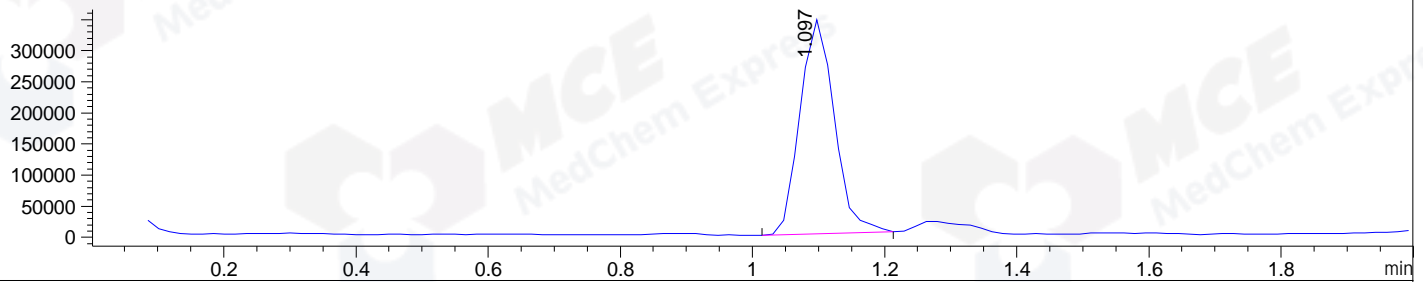
Gradient: 5% to 95%B within 0.6 min

Flow Rate : 0.8ml/min

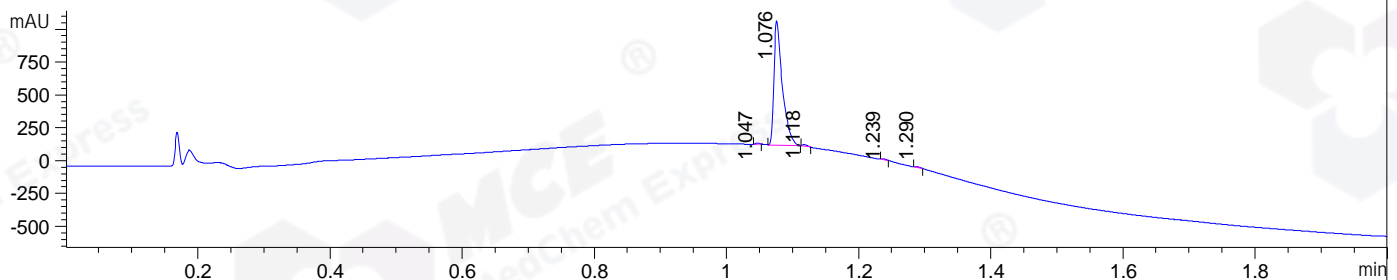
Column : Poroshell 120 EC- C18, 2.1*50mm,1.9um A-RP-677

Oven Temperature : 45C

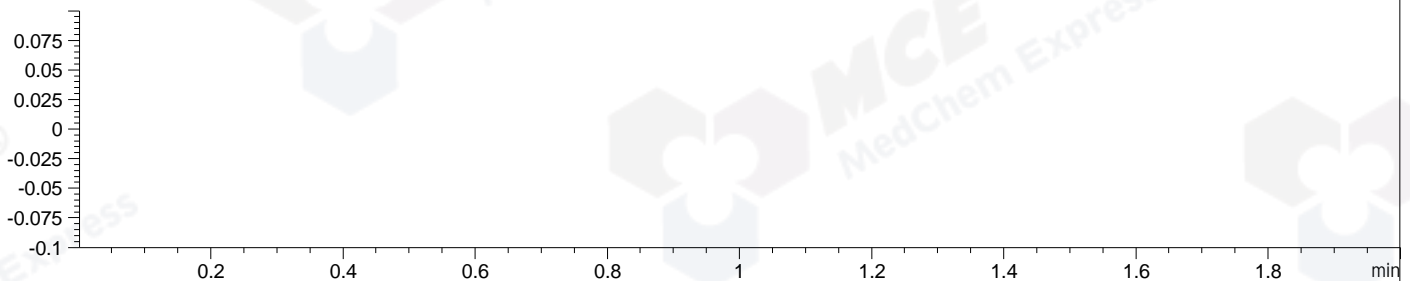
MSD1 TIC, MS File ES-API, Pos, Scan, Frag: 70



*DAD1, Sig=194.00, 2.00 Ref=off, EXT of WHW8419-059-8.D



Ion 1, MSD1 1, Target Mass 0 +H Positive, EIC=0.7:1.7



Integration Results for MSD1 TIC, MS File

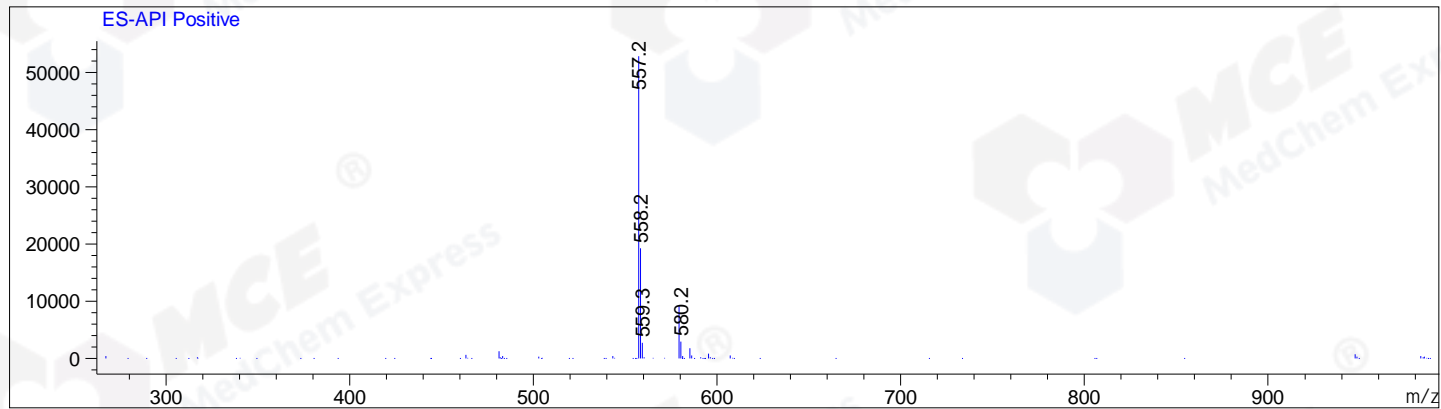
RetTim	Width	Area	Height	Area%	MS (+)
1.10	0.06	1239491.13	343444.38	100.00	557

Integration Results for DAD1, Sig=194.00, 2.00 Ref=off, EXT

RetTim	Width	Area	Height	Area%	MS (+)
1.05	0.01	4.31	8.97	0.51	557
1.08	0.01	835.20	940.07	98.07	557
1.12	0.01	6.16	12.25	0.72	557
1.24	0.01	2.64	5.91	0.31	805
1.29	0.01	3.33	6.60	0.39	805

Ret. Time: 1.10

<<<< POSITIVE SPECTRA >>>>



*** End of Report ***