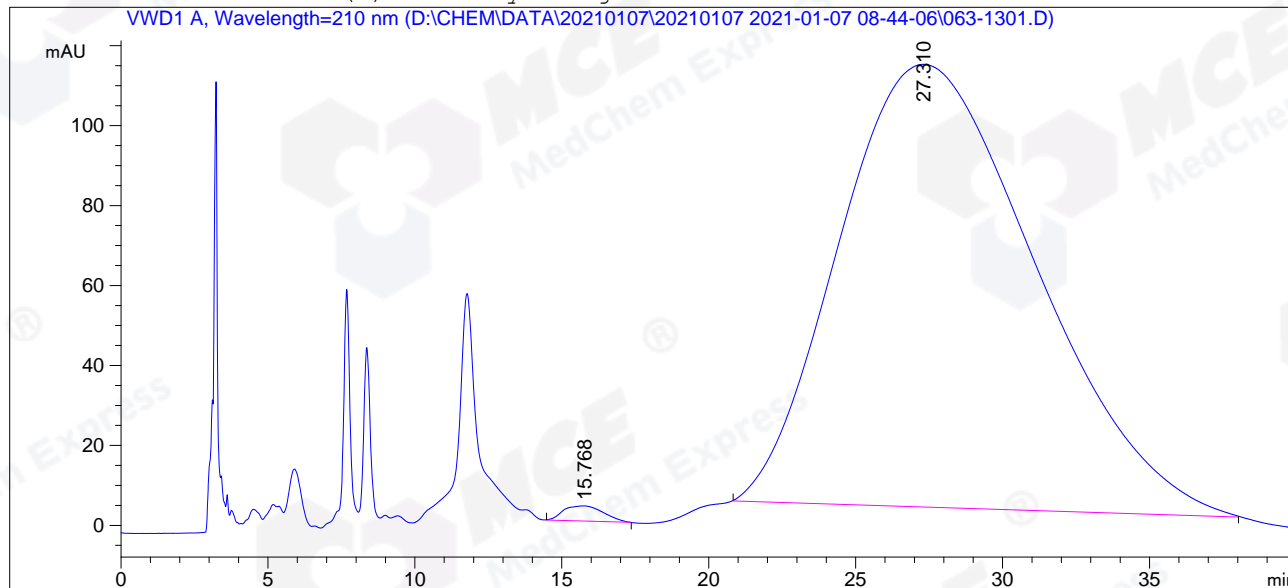


=====

Acq. Operator : cxw	Seq. Line : 13
Acq. Instrument : HPLC-04	Location : Vial 63
Injection Date : 1/7/2021 2:04:55 PM	Inj : 1
	Inj Volume : 5.0 µl
Different Inj Volume from Sequence !	Actual Inj Volume : 10.0 µl
Acq. Method : D:\CHEM\DATA\20210107\20210107 2021-01-07 08-44-06\AD,65-ETOH,210NM,C1.M	
Last changed : 11/3/2020 9:57:22 AM by cxw	
Analysis Method : D:\CHEM\METHODS\OD,85-ETOH,210NM.M	
Last changed : 1/8/2021 12:24:50 PM by cxw	
	(modified after loading)
CAS NO. : 1401066-79-2	
	C-NP-77

Additional Info : Peak(s) manually integrated



=====
Area Percent Report
=====

Sorted By : Signal
Multiplier: : 1.0000
Dilution: : 1.0000
Use Multiplier & Dilution Factor with ISTDs

Signal 1: VWD1 A, Wavelength=210 nm

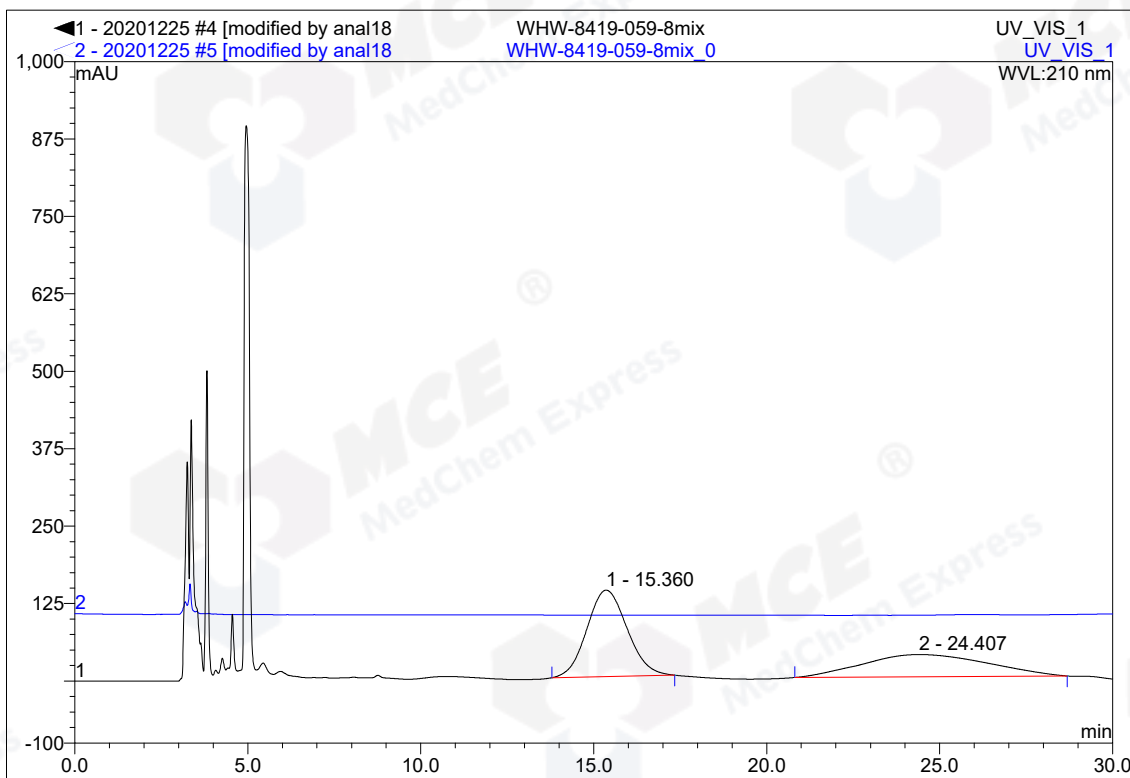
Peak #	RetTime [min]	Type	Width [min]	Area mAU*s	Height [mAU]	Area %
1	15.768	MM R	1.5558	354.81931	3.80098	0.6853
2	27.310	MM R	7.7373	5.14196e4	110.76122	99.3147

Totals : 5.17744e4 114.56220

=====
*** End of Report ***

4 WHW-8419-059-8mix**CAS NO.: 1401066-79-2 C-NP-77**

Sample Name:	WHW-8419-059-8mix	Injection Volume:	5.0
Vial Number:	RE1	Channel:	UV_VIS_1
Sample Type:	unknown	Wavelength:	210
Control Program:	AD,65-ETOH,210nm	Bandwidth:	n.a.
Quantif. Method:	default	Dilution Factor:	1.0000
Recording Time:	2020-12-25 14:45	Sample Weight:	1.0000
Run Time (min):	30.00	Sample Amount:	1.0000



No.	Ret.Time min	Peak Name	Height mAU	Area mAU*min	Rel.Area %	Amount	Type
1	15.36	n.a.	139.686	188.238	55.62	n.a.	BMB*
2	24.41	n.a.	35.874	150.200	44.38	n.a.	BMB*
Total:			175.560	338.437	100.00	0.000	