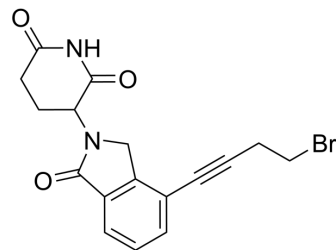


Lenalidomide-acetylene-Br

Cat. No.:	HY-156700
CAS No.:	2619512-84-2
Molecular Formula:	C ₁₇ H ₁₅ BrN ₂ O ₃
Molecular Weight:	375.22
Target:	PROTAC Linkers
Pathway:	PROTAC
Storage:	Please store the product under the recommended conditions in the Certificate of Analysis.



BIOLOGICAL ACTIVITY

Description

Lenalidomide-acetylene-Br is a PROTAC Linker that makes up HJM-561 (HY-156698). HJM-561 is a potent, selective, and orally active EGFR PROTAC to inhibit Osimertinib (HY-15772)-resistant EGFR triple mutations.

Caution: Product has not been fully validated for medical applications. For research use only.

Tel: 609-228-6898

Fax: 609-228-5909

E-mail: tech@MedChemExpress.com

Address: 1 Deer Park Dr, Suite Q, Monmouth Junction, NJ 08852, USA