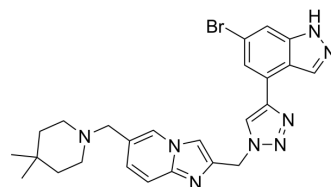


## STM3006

<b>Cat. No.:</b>	HY-156773		
<b>CAS No.:</b>	2499664-52-5		
<b>Molecular Formula:</b>	C <sub>25</sub> H <sub>27</sub> BrN <sub>8</sub>		
<b>Molecular Weight:</b>	519.44		
<b>Target:</b>	Apoptosis		
<b>Pathway:</b>	Apoptosis		
<b>Storage:</b>	Powder	-20°C	3 years
		4°C	2 years
	In solvent	-80°C	6 months
		-20°C	1 month



## SOLVENT & SOLUBILITY

### In Vitro

DMSO : 125 mg/mL (240.64 mM; Need ultrasonic)

Concentration	Mass		
	1 mg	5 mg	10 mg
<b>1 mM</b>	1.9252 mL	9.6258 mL	19.2515 mL
<b>5 mM</b>	0.3850 mL	1.9252 mL	3.8503 mL
<b>10 mM</b>	0.1925 mL	0.9626 mL	1.9252 mL

Please refer to the solubility information to select the appropriate solvent.

## BIOLOGICAL ACTIVITY

### Description

STM3006 is a highly potent, selective and orally active METTL3 inhibitor. STM3006 can be used for the research of acute myeloid leukaemia (AML)<sup>[1]</sup>.

## REFERENCES

[1]. Andrew A Guirguis, et al. Inhibition of METTL3 Results in a Cell-Intrinsic Interferon Response That Enhances Antitumor Immunity. *Cancer Discov.* 2023 Oct 5;13(10):2228-2247.

**Caution: Product has not been fully validated for medical applications. For research use only.**

Tel: 609-228-6898

Fax: 609-228-5909

E-mail: tech@MedChemExpress.com

Address: 1 Deer Park Dr, Suite Q, Monmouth Junction, NJ 08852, USA