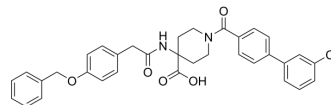


YL-365

Cat. No.:	HY-156815
Molecular Formula:	C ₃₄ H ₃₁ ClN ₂ O ₅
Molecular Weight:	583.07
Target:	Others
Pathway:	Others
Storage:	Please store the product under the recommended conditions in the Certificate of Analysis.



BIOLOGICAL ACTIVITY

Description

YL-365 is a antagonist of GPR34. YL-365 is used for pain and cancer research^[1].

REFERENCES

[1]. Anjie Xia, et al. Cryo-EM structures of human GPR34 enable the identification of selective antagonists. Proc Natl Acad Sci U S A. 2023 Sep 26;120(39):e2308435120.

Caution: Product has not been fully validated for medical applications. For research use only.

Tel: 609-228-6898

Fax: 609-228-5909

E-mail: tech@MedChemExpress.com

Address: 1 Deer Park Dr, Suite Q, Monmouth Junction, NJ 08852, USA