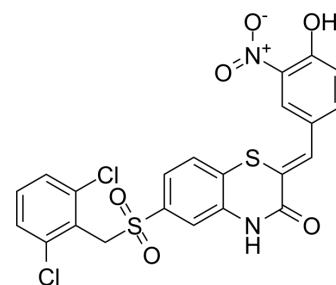


ON 108600

Cat. No.:	HY-156816		
CAS No.:	1585246-23-6		
Molecular Formula:	C ₂₂ H ₁₄ Cl ₂ N ₂ O ₆ S ₂		
Molecular Weight:	537.39		
Target:	Casein Kinase; DYRK		
Pathway:	Cell Cycle/DNA Damage; Stem Cell/Wnt; Protein Tyrosine Kinase/RTK		
Storage:	Powder	-20°C	3 years
		4°C	2 years
	In solvent	-80°C	6 months
		-20°C	1 month



SOLVENT & SOLUBILITY

In Vitro

DMSO : 100 mg/mL (186.08 mM; Need ultrasonic)

Concentration	Mass		
	1 mg	5 mg	10 mg
1 mM	1.8608 mL	9.3042 mL	18.6085 mL
5 mM	0.3722 mL	1.8608 mL	3.7217 mL
10 mM	0.1861 mL	0.9304 mL	1.8608 mL

Please refer to the solubility information to select the appropriate solvent.

BIOLOGICAL ACTIVITY

Description

ON 108600 is a inhibitor for CK2 (Casein Kinase2)/TNIK/DYRK1 , with the IC₅₀s for DYRK1A/DYRK1B, DYRK2, CK2α1/CK2α2, and TNIK of 0.016 μM/0.007 μM, 0.028 μM, 0.05 μM/0.005 μM, and 0.005 μM, respectively. ON 108600 has antitumor activity^[1].

IC₅₀ & Target

DYRK2 0.028 μM (IC ₅₀)	DYRK1A 0.016 μM (IC ₅₀)	DYRK1B 0.007 μM (IC ₅₀)	CK2α2 0.005 μM (IC ₅₀)
CK2α1 0.05 μM (IC ₅₀)			

REFERENCES

[1]. Katsutoshi Sato, et al. Simultaneous CK2/TNIK/DYRK1 inhibition by 108600 suppresses triple negative breast cancer stem cells and chemotherapy-resistant disease. Nat Commun. 2021 Aug 3;12(1):4671.

Caution: Product has not been fully validated for medical applications. For research use only.

Tel: 609-228-6898

Fax: 609-228-5909

E-mail: tech@MedChemExpress.com

Address: 1 Deer Park Dr, Suite Q, Monmouth Junction, NJ 08852, USA