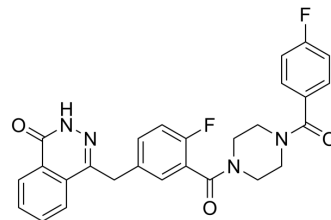


Parpi

Cat. No.:	HY-156982
CAS No.:	1919043-65-4
Molecular Formula:	C ₂₇ H ₂₂ F ₂ N ₄ O ₃
Molecular Weight:	488.49
Target:	Others
Pathway:	Others
Storage:	Please store the product under the recommended conditions in the Certificate of Analysis.



BIOLOGICAL ACTIVITY

Description

Parpi is a PET radioactive tracer with low lipotropy. Parpi can be used as a tumor imaging agent^[1].

REFERENCES

[1]. Sophie Stotz, et al. Two experts and a newbie: [18F]PARPi vs [18F]FTT vs [18F]FPyPARP—a comparison of PARP imaging agents. *Eur J Nucl Med Mol Imaging*. 2022, 49, 3.

Caution: Product has not been fully validated for medical applications. For research use only.

Tel: 609-228-6898

Fax: 609-228-5909

E-mail: tech@MedChemExpress.com

Address: 1 Deer Park Dr, Suite Q, Monmouth Junction, NJ 08852, USA