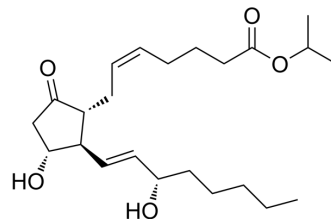


Prostaglandin E2 isopropyl ester

Cat. No.:	HY-157002
CAS No.:	71845-66-4
Molecular Formula:	C ₂₃ H ₃₈ O ₅
Molecular Weight:	394.54
Target:	Others
Pathway:	Others
Storage:	Please store the product under the recommended conditions in the Certificate of Analysis.



BIOLOGICAL ACTIVITY

Description

Prostaglandin E2 isopropyl ester (PGE2 isopropyl ester) is the precursor of PGE2.

Caution: Product has not been fully validated for medical applications. For research use only.

Tel: 609-228-6898

Fax: 609-228-5909

E-mail: tech@MedChemExpress.com

Address: 1 Deer Park Dr, Suite Q, Monmouth Junction, NJ 08852, USA