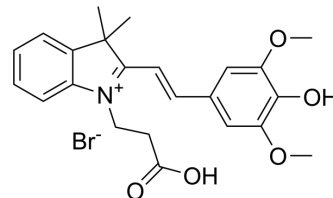


INSA

Cat. No.:	HY-157036
CAS No.:	2962939-33-7
Molecular Formula:	C ₂₃ H ₂₆ BrNO ₅
Molecular Weight:	476.36
Target:	Others
Pathway:	Others
Storage:	Please store the product under the recommended conditions in the Certificate of Analysis.



BIOLOGICAL ACTIVITY

Description

INSA is a pH-sensitive fluorescent probe. INSA can simultaneously light up mitochondria (red emission) and lysosomes (green emission) for their internal pH differences^[1].

REFERENCES

[1]. Wang J, et al. Revealing Mitochondrion-Lysosome Dynamic Interactions and pH Variations in Live Cells with a pH-Sensitive Fluorescent Probe. *Anal Chem.* 2023 Nov 2.

Caution: Product has not been fully validated for medical applications. For research use only.

Tel: 609-228-6898

Fax: 609-228-5909

E-mail: tech@MedChemExpress.com

Address: 1 Deer Park Dr, Suite Q, Monmouth Junction, NJ 08852, USA