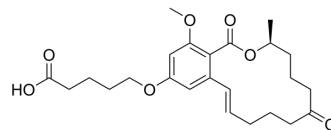


## Zeph

Cat. No.:	HY-157205
Molecular Formula:	C <sub>24</sub> H <sub>32</sub> O <sub>7</sub>
Molecular Weight:	432.51
Target:	Others
Pathway:	Others
Storage:	Please store the product under the recommended conditions in the Certificate of Analysis.



### BIOLOGICAL ACTIVITY

#### Description

Zeph is a small chemical group double heterologous hapten of Zep and combines with a specific antibody but lacks antigenicity of its own.

**Caution: Product has not been fully validated for medical applications. For research use only.**

Tel: 609-228-6898

Fax: 609-228-5909

E-mail: [tech@MedChemExpress.com](mailto:tech@MedChemExpress.com)

Address: 1 Deer Park Dr, Suite Q, Monmouth Junction, NJ 08852, USA