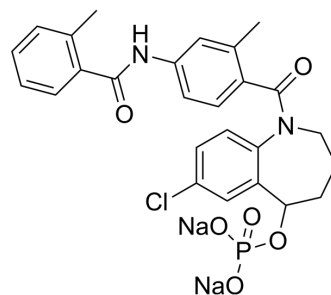


Tolvaptan phosphate ester sodium

| | |
|--------------------|-------------------------------------------------------------------------------------------|
| Cat. No.: | HY-157220 |
| CAS No.: | 942619-79-6 |
| Molecular Formula: | C ₂₆ H ₂₄ ClN ₂ Na ₂ O ₆ P |
| Molecular Weight: | 572.88 |
| Target: | Vasopressin Receptor |
| Pathway: | GPCR/G Protein |
| Storage: | Please store the product under the recommended conditions in the Certificate of Analysis. |



BIOLOGICAL ACTIVITY

Description

Tolvaptan phosphate ester sodium, a prodrug of Tolvaptan (HY-17000), can be used in the study of cardiac edema. Tolvaptan is a selective, competitive and orally active vasopressin receptor 2 (V2R) antagonist with an IC50 of 1.28 μM for the inhibition of arginine vasopressin (AVP)-induced platelet aggregation^{[1][2]}.

REFERENCES

[1]. Hiroyuki Fujiki, et al. In vitro and in vivo pharmacological profile of OPC-61815, a water-soluble phosphate ester pro-drug of tolvaptan. *J Pharmacol Sci.* 2022 Nov;150(3):163-172.

[2]. Wu Y, et al. Mechanisms of tolvaptan-induced toxicity in HepG2 cells. *Biochem Pharmacol.* 2015 Jun 15;95(4):324-36.

Caution: Product has not been fully validated for medical applications. For research use only.

Tel: 609-228-6898

Fax: 609-228-5909

E-mail: tech@MedChemExpress.com

Address: 1 Deer Park Dr, Suite Q, Monmouth Junction, NJ 08852, USA