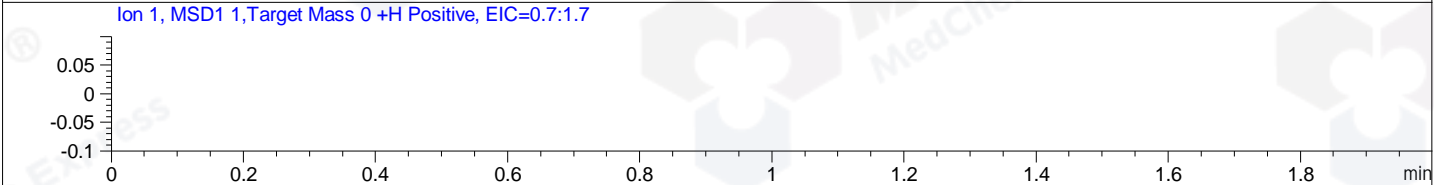
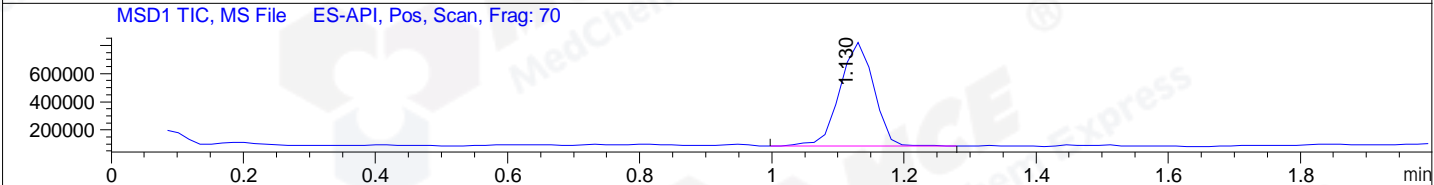
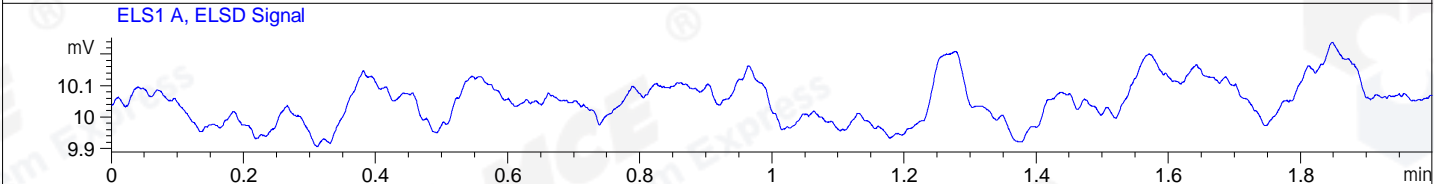
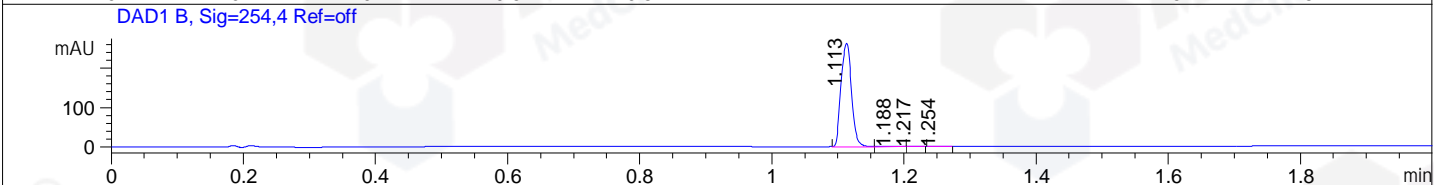
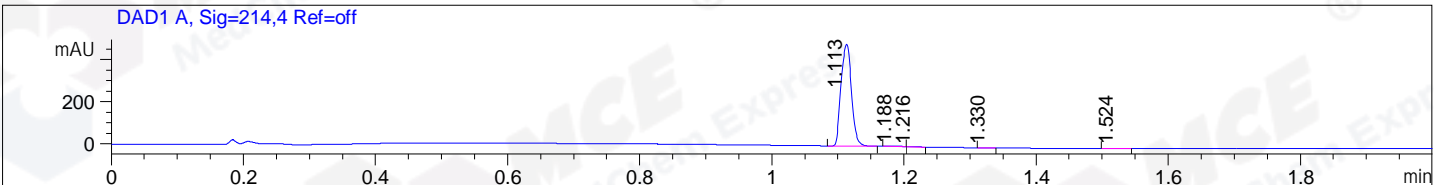


File ..0200910 2020-09-10 08-26-19\FSD8206-002-1.D Tgt Mass (CHM):
 Injection Date : 10 Sep 20 11:42 am +0800 Seq. Line : 51
 Sample Name : FSD8206-002-1 Location : P1-D-10
 Acq. Operator : SYSTEM Inj : 1
 Spec. Reported : MS Integration Inj Volume : 0.2 ul
 Acq. Method : D:\LCMS03\Data\20200910\20200910 2020-09-10 08-26-19\1-POS-UPLC2.0MIN(0.8ML)
 Analysis Method : D:\LCMS03\Data\20200910\20200910 2020-09-10 08-26-19\1-POS-UPLC2.0MIN(0.8ML) -
 Catalog No : HY-15724A
 Method Info : Mobile Phase: A: water(0.01%TFA) B:ACN(0.01%TFA)
 Gradient: 5% to 95%B within 0.6 min
 Flow Rate :0.8ml/min
 Column :Poroshell 120 EC- C18, 2.1*50mm,1.9um A-RP-463
 Oven Temperature : 45C



Integration Results for DAD1 A, Sig=214,4 Ref=off

RetTim	Width	Area	Height	Area%	MS (+)
1.11	0.02	533.35	483.99	98.76	445
1.19	0.02	4.24	3.62	0.79	161
1.22	0.02	1.10	0.95	0.20	161
1.33	0.02	0.77	0.72	0.14	161
1.52	0.02	0.60	0.45	0.11	161

Integration Results for DAD1 B, Sig=254,4 Ref=off

RetTim	Width	Area	Height	Area%	MS (+)
1.11	0.02	289.26	262.00	99.43	445
1.19	0.03	1.02	0.67	0.35	445
1.22	0.02	0.40	0.40	0.14	161
1.25	0.02	0.24	0.18	0.08	161

Integration Results for ELS1 A, ELSD Signal

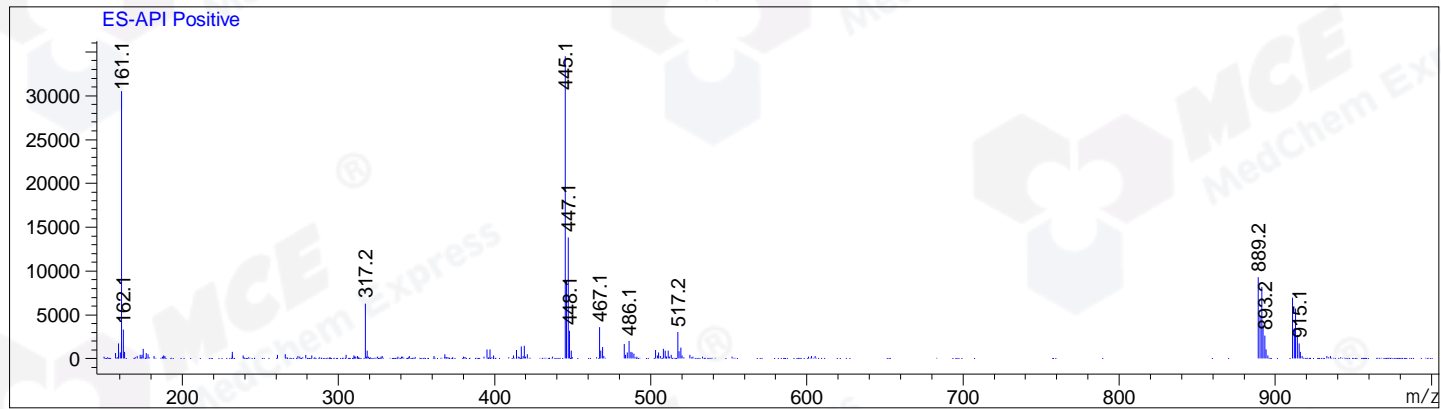
RetTim	Width	Area	Height	Area%	MS (+)
--------	-------	------	--------	-------	--------

Integration Results for MSD1 TIC, MS File

RetTim	Width	Area	Height	Area%	MS (+)
1.13	0.06	2653722.25	736461.06	100.00	445

Ret. Time: 1.13

<<<< POSITIVE SPECTRA >>>>



*** End of Report ***