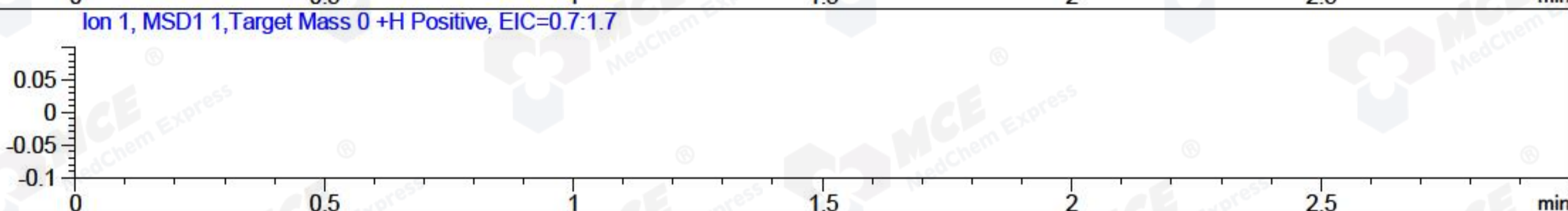
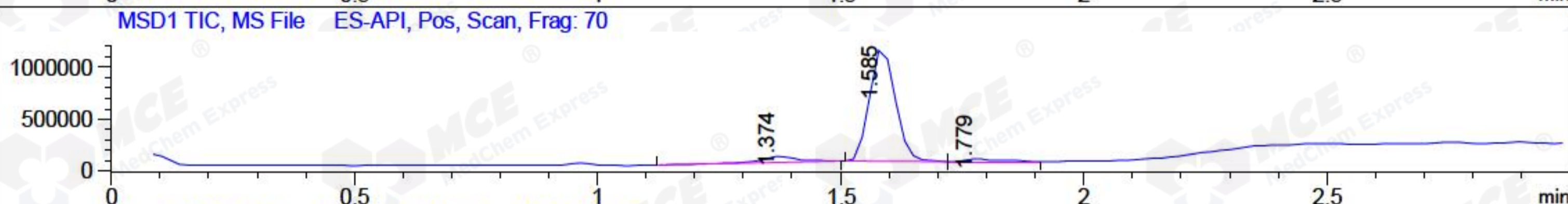
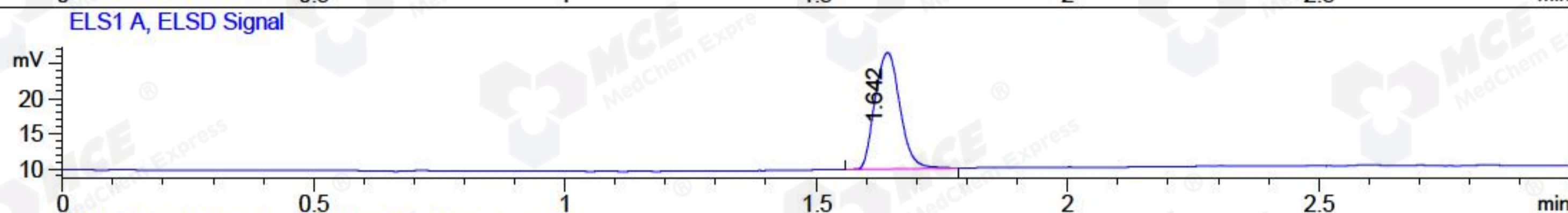
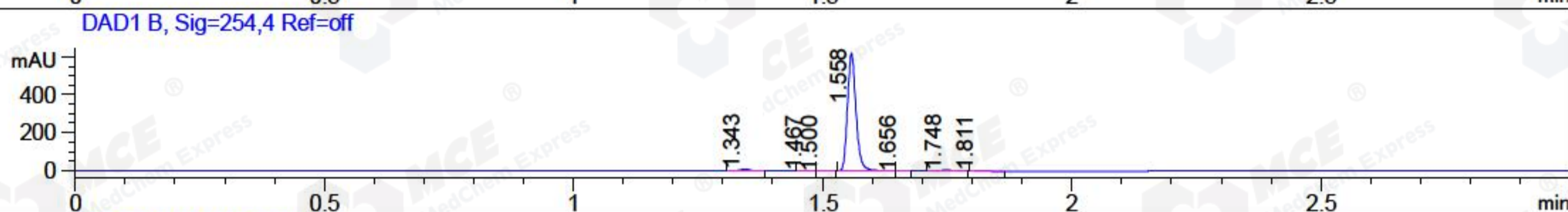
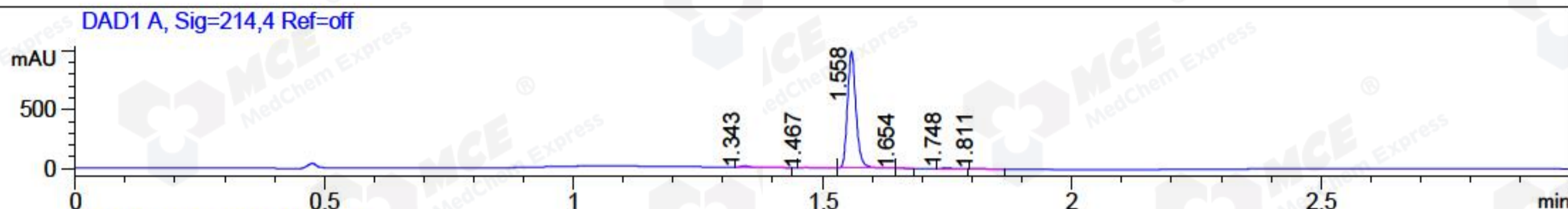


File ..\2018\20180820\20180820\CPK2018-817-18818.D Tgt Mass (CHM):  
 Injection Date : 20 Aug 18 11:35 am +0800 Seq. Line : 35  
 Sample Name : CPK2018-817-18818 Location : P1-C-10  
 Acq. Operator : SYSTEM Inj : 1  
 Spec. Reported : MS Integration Inj Volume : 1 ul  
 Acq. Method : D:\LCMS03\Data\2018\20180820\20180820\1-POS-3MIN.M  
 Analysis Method : D:\LCMS03\Data\2018\20180820\20180820\1-POS-3MIN.M  
 Catalog No : HY-15729A Batch#18818  
 Method Info : Mobile Phase: A: water(0.01%TFA) B:ACN(0.01%TFA)  
 Gradient: 5% to 95%B within 1.3 min  
 Flow Rate :1.8ml/min  
 Column :SunFire C18, 4.6\*50mm,3.5um A-RP-186  
 Oven Temperature : 45C



Integration Results for DAD1 A, Sig=214,4 Ref=off

RetTim	Width	Area	Height	Area%	MS (+)
1.34	0.02	13.18	11.54	1.10	542
1.47	0.02	2.33	1.82	0.19	233
1.56	0.02	1163.90	983.26	97.45	556
1.65	0.02	0.60	0.53	0.05	233
1.75	0.02	9.06	7.90	0.76	233
1.81	0.02	5.35	4.48	0.45	233

Integration Results for DAD1 B, Sig=254,4 Ref=off

RetTim	Width	Area	Height	Area%	MS (+)
1.34	0.02	10.54	8.57	1.39	514
1.47	0.02	1.18	1.24	0.16	233
1.50	0.02	0.18	0.17	0.02	233
1.56	0.02	735.08	618.02	96.87	556
1.66	0.02	0.49	0.51	0.06	233
1.75	0.02	7.11	5.75	0.94	233
1.81	0.02	4.23	3.53	0.56	233

## Integration Results for ELS1 A, ELSD Signal

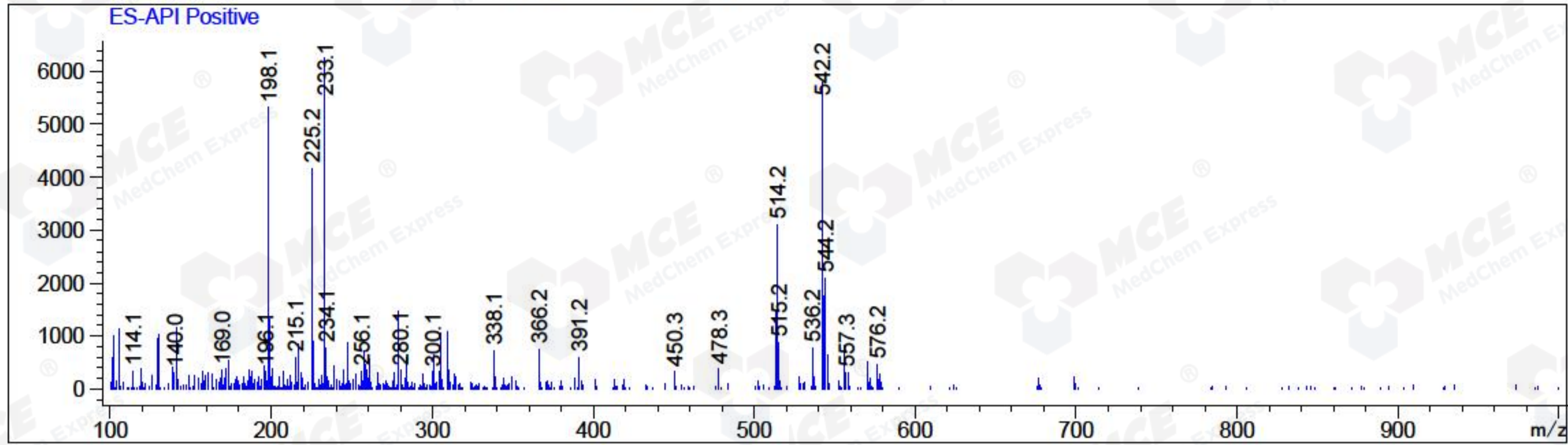
RetTim	Width	Area	Height	Area%	MS (+)
1.64	0.06	57.28	16.51	100.00	556

## Integration Results for MSD1 TIC, MS File

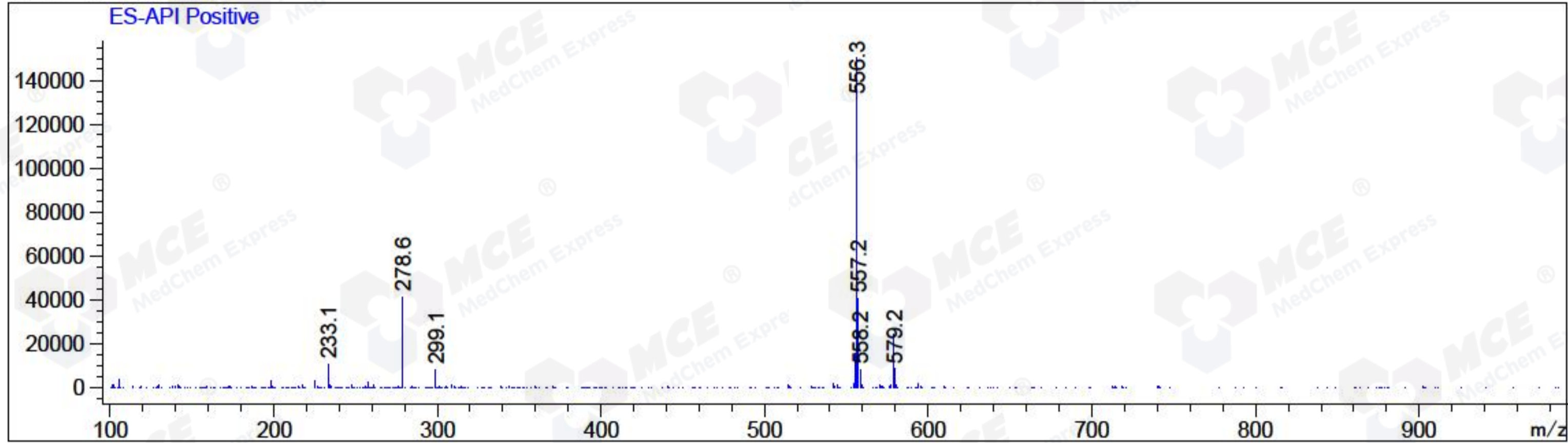
RetTim	Width	Area	Height	Area%	MS (+)
1.37	0.08	298978.16	55896.71	6.74	233
1.58	0.06	4006237.00	1087001.50	90.35	556
1.78	0.08	128951.52	25402.25	2.91	233

Ret. Time: 1.37

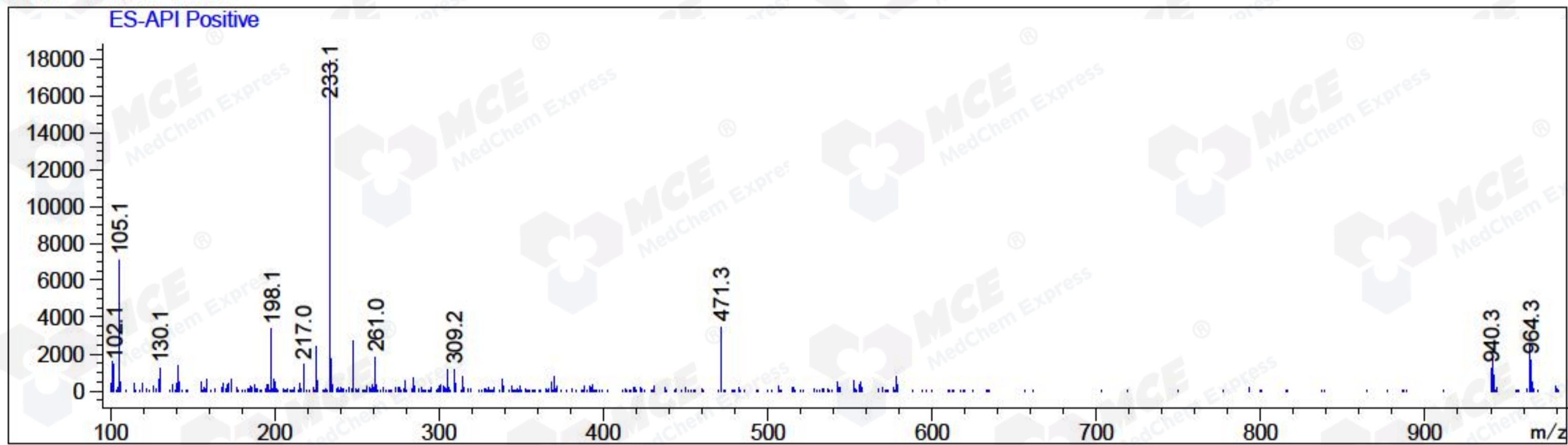
<<<< POSITIVE SPECTRA >>>>



Ret. Time: 1.58



Ret. Time: 1.78



\*\*\* End of Report \*\*\*