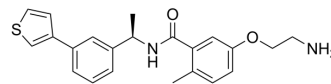


## Jun11165

Cat. No.:	HY-157305
Molecular Formula:	C <sub>22</sub> H <sub>24</sub> N <sub>2</sub> O <sub>2</sub> S
Molecular Weight:	380.5
Target:	SARS-CoV
Pathway:	Anti-infection
Storage:	Please store the product under the recommended conditions in the Certificate of Analysis.



### BIOLOGICAL ACTIVITY

Description	Jun11165 is a SARS-CoV-2 PL <sup>Pro</sup> inhibitor (IC <sub>50</sub> ≤ 0.6 μM), which inhibits SARS-CoV-2 with an EC <sub>50</sub> value of ≤ 6 μM. Jun11165 can be used in the research of viral infections <sup>[1]</sup> .
IC <sub>50</sub> & Target	IC <sub>50</sub> : ≤ 0.6 μM (SARS-CoV-2 PL <sup>Pro</sup> ) <sup>[1]</sup> EC <sub>50</sub> : ≤ 6 μM (SARS-CoV-2) <sup>[1]</sup> .

### REFERENCES

[1]. Jadhav P, et al. Structure-based design of SARS-CoV-2 papain-like protease inhibitors. Eur J Med Chem. 2023 Dec 5;264:116011.

**Caution: Product has not been fully validated for medical applications. For research use only.**

Tel: 609-228-6898

Fax: 609-228-5909

E-mail: tech@MedChemExpress.com

Address: 1 Deer Park Dr, Suite Q, Monmouth Junction, NJ 08852, USA